

THE BUZZELL BUZZ

THE DEPARTMENT OF ELDERLY SERVICES

JANUARY 2024

BUZZELL

SENIOR CENTER

15 SCHOOL STREET
WILMINGTON,
MA 01887

TELEPHONE:

978-657-7595 OR
978-658-2258

MONDAY – FRIDAY
9:00AM – 4:30PM



Department of Elderly Services

Staff Contact Information

Director:

Terri Marciello
TMARCIELLO@WILMINGTON
MA.GOV

Case Manager:

Laura Pickett
LPICKETT@WILMINGTON
MA.GOV

Senior Clerk:

Kelly Fordham
KFORDHAM@WILMINGTON
MA.GOV

Coordinator

Assistant:

Debra Hurley
DHURLEY@
WILMINGTONMA.GOV

Van Driver:

Sonja Halliday



NEWS & UPDATES

We hope everyone had a wonderful and safe holiday season. We would like to take a moment to welcome back our van driver Sonja, who was greatly missed! A reminder that transportation is available to local medical appointments, grocery stores, pharmacies, hair salons, and more! Call the center to schedule your ride.

Every holiday season we receive a donation from a mystery source named “Anne Nonni Mous.” Since we can’t formally thank them, as we don’t know who they are, we’d like to say “thank you” here, in hopes that they read this. Also, a big thank you to Dagle Electrical Construction Corporation for giving us another very generous donation this year. These donations went towards our special homebound meals this year. Speaking of giving back, our annual Giving Tree had a great outcome. We thank everyone who participated and helped to make the holidays a little bit brighter for all.

Plans for the income tax preparation program are underway. We will be having this free tax service again this year thanks to our AARP volunteers. **Call the center beginning on Tuesday, January 30, 2024 at 11:00AM to sign up.** See page 6 for more details.

This newsletter is full of photos! See photos from throughout 2023, our holiday party, and more! To the right is our “Holiday cheers from the Senior Center” tree from the Festival of Trees. Thank you to everyone who donated or made ornaments for our tree. We encourage you to take a look this newsletter in color on our Facebook page or at wilmingtonma.gov.

Just a reminder from the Town Clerks Office that dog registration is due by March 31, 2024. **Registration is free for anyone over 70.**

Please note that the center will be closed on Monday, January 1, 2024 in observation of New Years Day and Monday, January 15, 2024 in observation of Martin Luther King Jr. Day. There will be no home delivered meals on these dates as well.



INCLEMENT WEATHER POLICY



The Department of Elderly Services storm policy states that when the Wilmington Schools are closed due to inclement weather, all scheduled Senior Center activities are also cancelled for the day. No home delivered meals are served and transportation is cancelled. The center will remain open for emergencies.



Please note that you may receive automated calls from the Senior Center that may appear as coming from Belmont, MA. These are **not** spam calls and will be recordings with important center information and updates. They may be voice recorded calls or automated calls. Feel free to call with any questions or concerns.

NEW YEARS LUNCHEON



When: Friday, January 19, 2024
at 12:30PM at the Senior Center

Cost: \$4.00

Celebrate the new year with a meal catered by Rocco's.

This is an in person sign up beginning on Monday, January 8, 2024 at 10:00AM. Please have payment ready at sign up. Limited space is available.

TEA PARTY

When: Wednesday, January 10, 2024 at 1:00PM

Cost: \$4.00



We are having a tea party! The sign up for this event was in December. Call the center to see if space is still available.

NO SEW QUILT

When: Monday, January 22, 2024 at 1:00PM



Join Nancy to make this bouquet of flowers. The cost is \$30.00 which includes all that you will need to make your own beautiful collage quilt and the finishing touches.

Nancy Sandreuter is a certified teacher for the Laura Heine method of collage quilting.

Sign up was in December, call the center to see if space is still available.

KIWANIS LUNCHEON

Let's celebrate the new year together!

When: Sunday, January 28, 2024 at 12:00PM
at the Senior Center

What's on the menu?: Harrows pot pie



This luncheon is brought to you by Kiwanis and has no cost. *Call the center to sign up beginning on Tuesday, January 9, 2024 at 10:00AM.*

Limited space is available.

SAVE THESE FEBRUARY DATES!



Valentine's Day Luncheon with Rotary Interact

When: Wednesday, February 14, 2024 at 12:30PM
at the Senior Center

What's on the menu?: Harrows pot pie

Sign up begins on Thursday, February 1, 2024 at 10:00AM. Limited space is available.



Bridging Generations

When: Saturday, February 10, 2024
from 10:00AM to 12:00PM

A new intergenerational program created by Wilmington High School students. Come join the fun with these innovative students for games and refreshments at the Senior Center.

Sign up begins on Wednesday, January 24, 2024 at 10:00AM

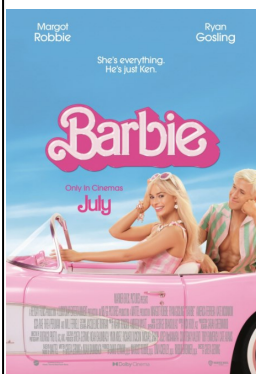
MOVIE DAY

When: Monday, January 29, 2024
at 1:00PM

Join us to watch Barbie (2023)

To live in Barbie Land is to be a perfect being in a perfect place. Unless you have a full-on existential crisis. Or you're a Ken.

Call the center to sign up!



WOOD CARVING

Dates for wood carving for the month of January will be announced shortly.



INSTANT POT

When: Thursday, January 25, 2024 at 11:00AM

Come learn what your instant pot can do! Call the center to sign up!



JANUARY BIRTHDAYS

Sylvia Barbas	Joanne Fisher	Jo-Ann Jordan	Constance Rando
Linda Barrett	Jean George	Rose LaVerde	Carolyn Richburg
Kathy Brennick	Paul Hojlo	Jean Leahy	Margery Spear
Dot Cunha	Deborah Harrington	Priscilla Marshall	Joanne Tompkins
Patricia Cucinotta	Joan Hayden	Ken Michaud	John Wallace
Emily Dukus	Carmen Hale	Nancy Otovic	Betty Wolfe
Beverly Doyle	Patricia Ide	Ruthann Paiva	
Gloria Diehl	Catherine Jensen	Sara Piazza	
Jane Forest	Jack Kavanaugh	Carolyn Ryan	

We can't help you blow out the candles on your cake unless you tell us your special day! Call the senior center to confirm your birthday month so that we can mention you in future newsletters!

CAREGIVERS SUPPORT GROUP



This month our Caregivers Support Group will be on
Monday, January 22, 2024
from 10:30AM-12:00PM

The role of the caregiver can be a difficult one. If you are caring for a loved one, please feel free to join us.

INDOOR CORNHOLE



When: Friday, January 26, 2024
at 2:00PM

Call the center to sign up!

HIKING GROUP

The Hiking Group meets on Tuesdays and Thursdays to hike in various locations both locally and in surrounding towns. If you are interested in joining, please register by calling the Senior Center.



As of deadline for this newsletter, there were 5 hikes and 24 attendees with two more hikes to go!

BINGO

Join us for BINGO! Bingo is on the first and third Wednesday of the month at 1:00PM. No need to sign up. Just stop by!



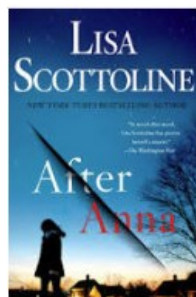
Wednesday, January 3, 2024 at 1:00PM
Wednesday, January 17, 2024 at 1:00PM

Please bring small bills, preferably ones or fives to play

BOOK CLUB

The Book Club meets on the 4th Monday of the month at 1:30PM. The next meeting is
Monday, January 22, 2024
at 1:30PM

This month's book is
After Anna
By: Lisa Scottoline, 2018



CANDY RAFFLE



CONGRATULATIONS TO FRANK PULEO

Frank Puleo and Kathy Perito both guessed 175. There were 186 candies in the jar. Frank's name was chosen randomly. *Please remember to write your name along with your guess! We had someone guess 185 but didn't write their name!* Make sure to stop by the front desk to enter our January candy raffle.

One lucky winner will be chosen on Tuesday, January 23, 2024

2023, WHAT A YEAR!



HOLIDAY PARTY 2023





FUEL ASSISTANCE

The Community Teamwork, Inc. Fuel Assistance Program is available to new applicants starting October 1, 2023. Fuel Assistance can help pay part of your home's winter heating bill. This program begins on November 1, 2023.

Any Wilmington resident who is 60 years or older in need of fuel assistance, please call the center to set up your appointment for assistance in the application process with Terri or Laura at 978-657-7595.

Renewal information has been mailed to Wilmington residents that applied last year. Please call the center for an appointment if you need assistance with the renewal form. (Residents under the age of 60 should contact the Billerica Veteran's Agent at 978-671-0968). Please feel free to call the center if you have any other questions. Also, all copies can be made at the center.

Household Size	Max. Gross Income
1	\$45,392
2	\$59,359
3	\$73,326
4	\$87,294

FREE INCOME TAX ASSISTANCE



Sign up for income tax appointments will begin on **Tuesday, January 30, 2024 at 11:00AM.**

Please call the center to make your appointment. Appointments will fill up very quickly! Please be patient when calling to make an appointment as we will be experiencing a high volume of calls. Since this is such a busy sign up, we will only be taking your name, phone number, and address. After all appointments have been filled, we will begin call backs to give you a date and time.

On the day of your appointment: Please see below and come to your appointment prepared.

As always, thank you to our wonderful AARP volunteers for making this great service possible again this year!

What you will need to bring:

1. Identification and Social Security numbers for all persons on the return.
2. Last years tax return (2022)
3. All 2023 tax forms received in the mail:
 - 1099 R for pension
 - 1099 INT for interest
 - 1099 DIV for dividends
 - 1099 R for IRA's
 - 1099 G for lottery winnings
 - Investment statements
 - Social Security form
 - 1444 & 1444B for stimulus amounts
4. For itemizing deductions:
 - Medical costs
 - Insurance
 - Copays
 - Taxes paid-Real Estate
 - Mortgage statements
 - Excise taxes for car
5. Senior Circuit Breaker:
 - Real Estate Tax
 - Water and sewer bills.
 - House value



JANUARY 2024

SUN	MON	TUES	WEDS	THUR	FRI	SAT
	1 NEW YEARS DAY: CENTER CLOSED	2 • HIKING GROUP 9:00AM • DANCE & TONE 9:30AM • BEADING 10:30AM • FUNCTIONALLY FIT 2:00PM	3 • BLOOD PRESSURE 9:00AM • SPECIAL EXERCISE 9:30AM • CARDS & GAMES 1:00PM • POKER 1:00PM • BINGO 1:00PM	4 • HIKING GROUP 9:00AM • GENTLE YOGA 9:00AM • ART 9:45AM • KNITTING & CROCHETING 10:30AM • COUNTRY LINE DANCING 10:30AM • CERAMICS 1:30PM • FUNCTIONALLY FIT 2:00PM	5 • ZUMBA 9:00AM • SEWING 9:30AM • CHAIR YOGA 12:30PM • POKER 1:00PM	6
7	8 • TAI CHI: 9:00AM • SIGN UP NEW YEARS LUNCHEON 10:00AM • SPECIAL EXERCISE 10:30AM • WII BOWLING 11:30AM • CRIBBAGE 1:00PM	9 • HIKING GROUP 9:00AM • DANCE & TONE 9:30AM • SIGN UP KIWANIS LUNCHEON 10:00AM • BEADING 10:30AM • FUNCTIONALLY FIT 2:00PM	10 • BLOOD PRESSURE 9:00AM • SPECIAL EXERCISE 9:30AM • TEA PARTY 1:00PM • CARDS & GAMES 1:00PM • POKER 1:00PM	11 • HIKING GROUP 9:00AM • GENTLE YOGA 9:00AM • ART 9:45AM • KNITTING & CROCHETING 10:30AM • COUNTRY LINE DANCING 10:30AM • CERAMICS 1:30PM • FUNCTIONALLY FIT 2:00PM	12 • ZUMBA 9:00AM • SEWING 9:30AM • CHAIR YOGA 12:30PM • POKER 1:00PM	13
14	15 MARTIN LUTHER KING JR. DAY: CENTER CLOSED	16 • HIKING GROUP 9:00AM • DANCE & TONE 9:30AM • BEADING 10:30AM • FUNCTIONALLY FIT 2:00PM	17 • BLOOD PRESSURE 9:00AM • SPECIAL EXERCISE 9:30AM • CARDS & GAMES 1:00PM • POKER 1:00PM • BINGO 1:00PM	18 • HIKING GROUP 9:00AM • GENTLE YOGA 9:00AM • ART 9:45AM • KNITTING & CROCHETING 10:30AM • COUNTRY LINE DANCING 10:30AM • CERAMICS 1:30PM • COMMISSIONERS MEETING 1:30PM	19 • ZUMBA 9:00AM • SEWING 9:30AM • NEW YEARS LUNCHEON 12:30PM • POKER 1:00PM	20
21	22 • TAI CHI: 9:00AM • SPECIAL EXERCISE 10:30AM • CAREGIVERS SUPPORT 10:30AM • WII BOWLING 11:30AM • NO SEW QUILT 1:00PM • BOOK CLUB 1:30PM • CRIBBAGE 1:00PM	23 • HIKING GROUP 9:00AM • DANCE & TONE 9:30AM • BEADING 10:30AM • FUNCTIONALLY FIT 2:00PM • CANDY RAFFLE 11:00AM	24 • BLOOD PRESSURE 9:00AM • SPECIAL EXERCISE 9:30AM • SIGN UP BRIDGING GENERATIONS 10:00AM • CARDS & GAMES 1:00PM • POKER 1:00PM	25 • HIKING GROUP 9:00AM • GENTLE YOGA 9:00AM • ART 9:45AM • KNITTING & CROCHETING 10:30AM • COUNTRY LINE DANCING 10:30AM • INSTANT POT 11:00AM • CERAMICS 1:30PM • FUNCTIONALLY FIT 2:00PM	26 • ZUMBA 9:00AM • SEWING 9:30AM • CHAIR YOGA 12:30PM • POKER 1:00PM • CORNHOLE 2:00PM	27
28 KIWANIS LUNCHEON AT 12:00PM	29 • TAI CHI: 9:00AM • SPECIAL EXERCISE 10:30AM • WII BOWLING 11:30AM • CRIBBAGE 1:00PM • MOVIE DAY 1:00PM	30 • HIKING GROUP 9:00AM • DANCE & TONE 9:30AM • BEADING 10:30AM • INCOME TAX SIGN UP 11:00AM • FUNCTIONALLY FIT 2:00PM	31 • BLOOD PRESSURE 9:00AM • SPECIAL EXERCISE 9:30AM • CARDS & GAMES 1:00PM • POKER 1:00PM			



TOWN OF WILMINGTON

CURRENT RESIDENT OR

PRESORTED
STANDARD
US POSTAGE PAID
WILMINGTON, MA
PERMIT NO 10

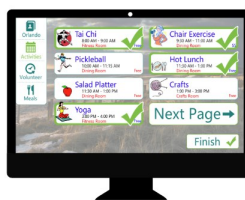
my seniorcenter™



Next time you are at the center, please take a moment to stop at the front desk. We would like to update your profile and make sure we have correct information for you including your emergency contacts. This will only take a minute or two.

REMINDER!

Just a friendly reminder that it is very important to sign in to all events, activities, and classes every time you come to the center. If you do not have a card to scan, please ask for a new one at the front desk.



CALL THE CENTER IF YOU NEED...

- Incontinence products
 - Flushable wipes
 - Hearing aid batteries
- Medical equipment such as walkers, wheelchairs, commodes, showers chairs, etc.
 - Nutritional Drinks (Ensure/Boost)
 - Puzzles
 - Books and Puzzle Books
 - DVD's