

WILMINGTON FACILITY MASTER PLAN

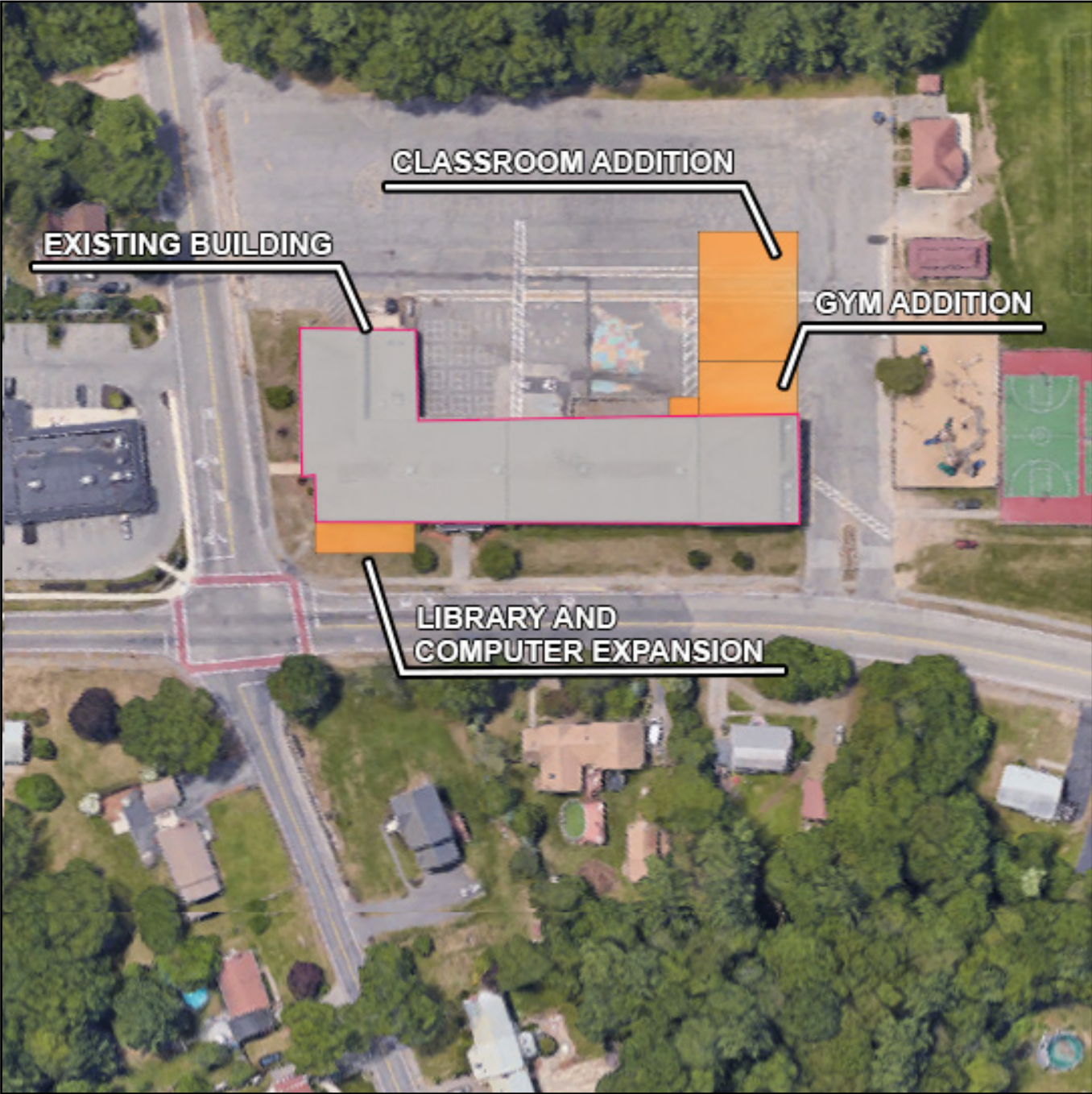
Educational Facility Alternative Scenarios

Preferred Alternative S6

Two Pre-K to Grade 2 Schools, Two Grade 3 - 5 Schools and closing Boutwell and Wildwood.



WOBURN



SHAWSHEEN



WEST INTERMEDIATE



NORTH INTERMEDIATE

ALTERNATIVE S6

This alternative is considered preferred because it eliminates schools that need the most work, eliminates a transition, keeps geographic balance and invests in our existing infrastructure with additions and renovations to existing schools.

COMMENTS: *Write your thoughts below.*

BASELINE SCENARIOS

S1 Existing schools targeted improvements

Extend the life of the existing facility, correct deferred maintenance items, and improve the quality of education spaces without building additions.

S2 Existing schools improved to meeting current space standards

Improve the existing buildings including major renovation and addition as required to meet current education standards that would be applicable to new facilities or major renovations. Building-wide ADA and code upgrades are anticipated.

CONSOLIDATION AND ADDITION SCENARIOS

S3 Four Elementary Schools

Create 4 schools of relatively equal size, all housing pre-kindergarten (Pre-K) through grade 5. The extent of modifications is determinant on the existing condition of each remaining school.

S4 One Pre-K Kindergarten School, Three Elementary Schools

Modify an existing school to create a single school for grades Pre-K - K . Create 3 schools of relatively equal size, all housing grade 1 through grade 5. The extent of modifications is determinant on the existing condition of each remaining school.

S5 One Pre-K School, Three K-5 Schools

Modify an existing school to create a single school for grades Pre-K. Create 3 schools of relatively equal size, all housing grades K through grade 5. The extent of modifications is determinant on the existing condition of each remaining school.