



Town of  
**Wilmington**  
MASSACHUSETTS

## Municipal Vulnerability Preparedness

*Building Climate Change Resiliency*

### Wilmington's Top Four Natural Hazards (based on MVP)



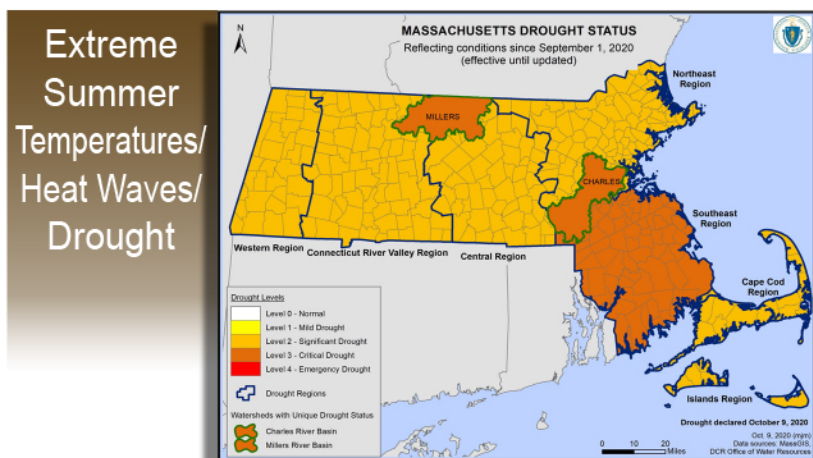
Flooding



High Winds/  
Tornados



Extreme  
Winter  
Events/  
Nor'easters



Extreme  
Summer  
Temperatures/  
Heat Waves/  
Drought

If you have any questions on this brochure or would like to get involved in building resiliency within the Town, please contact  
Department of Public Works or  
Department of Conservation & Planning  
at (978) 658-3311 or via email:

Valerie Gingrich  
vingrich@wilmingtonma.gov

Paul Alunni  
palunni@wilmingtonma.gov

## Why is understanding Climate Change Important?

Climate Change presents a major challenge in Wilmington as the increase in flooding and other climate-influenced hazards such as droughts, severe winter storms, and high winds that have been impacting the Town in the past are likely to increase in frequency, presenting future threats to Wilmington's assets, public and private properties, public health, economy, and the environment.

The MVP Program takes into consideration societal, economic and environmental impacts of climate change on the Massachusetts communities.

Website: <https://resilientma.org/mvp>

## Climate Change continues to impact many aspects of our lives



© 2021 World Meteorological Organization (WMO)

## Who is at most risk from Climate Change Impacts?

- People with disabilities or underlying health issues
- Elderly, children with infirmities, and low-income individuals
- People who have difficulty adapting to, preparing for, recovering from extreme weather events
- People who live or work in vulnerable locations and experience disproportionate exposure to environmental pollution.

## Natural resources lessen Climate Impacts

### Nature Based Solutions

"actions to protect, sustainably manage and restore natural or modified ecosystems that address societal challenges effectively and adaptively, simultaneously providing human well-being and biodiversity benefits"

### Why do we need Nature-based Solutions?

©IUCN



The use of Nature Based Solutions (NBS) can help mitigate climate impacts as well as provide benefits for our society and environment. Below are some examples of NBS installed within the Town of Wilmington.



Rain Garden



Porous Pavement





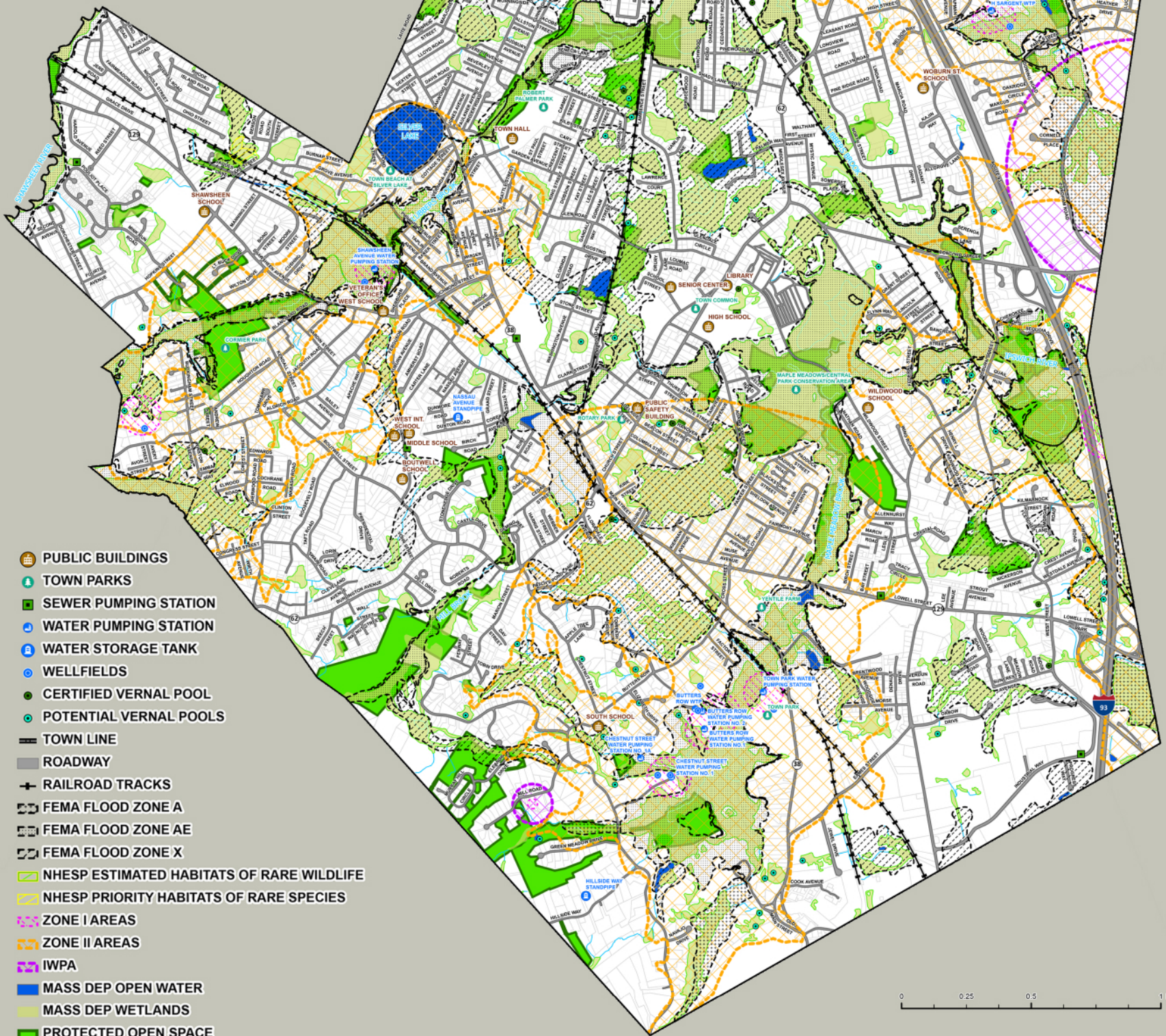
Town of  
**Wilmington**  
MASSACHUSETTS

Map of Wilmington's Critical Facilities  
and Environmental Assets



Wilmington's land coverage  
is 19% wetlands.

Wetlands, Forest, Open  
Space, Rivers & Streams  
protect water quality,  
provide flood control,  
and give relief from  
extreme heat



0 0.25 0.5 1 Mile



There are 3 major Basins within Wilmington (Ipswich is the largest). Ipswich basin is expected to experience an increase in days over 90°F by 6-22 days by 2050. Ipswich basin is expected to experience an increase in precipitation by +5 inches by 2050.

Opportunities for the public to participate in the Town's resiliency efforts are:

- Annual Clean-Up Day (observed in September - October)
- Annual Arbor Day (observed in April)
- Land Stewardship Program



TREE CITY USA

Wilmington was awarded the "Tree City USA" designation in 2021. Trees help build our community's climate resiliency by storing carbon removed from the atmosphere and releasing oxygen into the atmosphere, creating cooling shade during extreme heat and blocking cold winter winds.