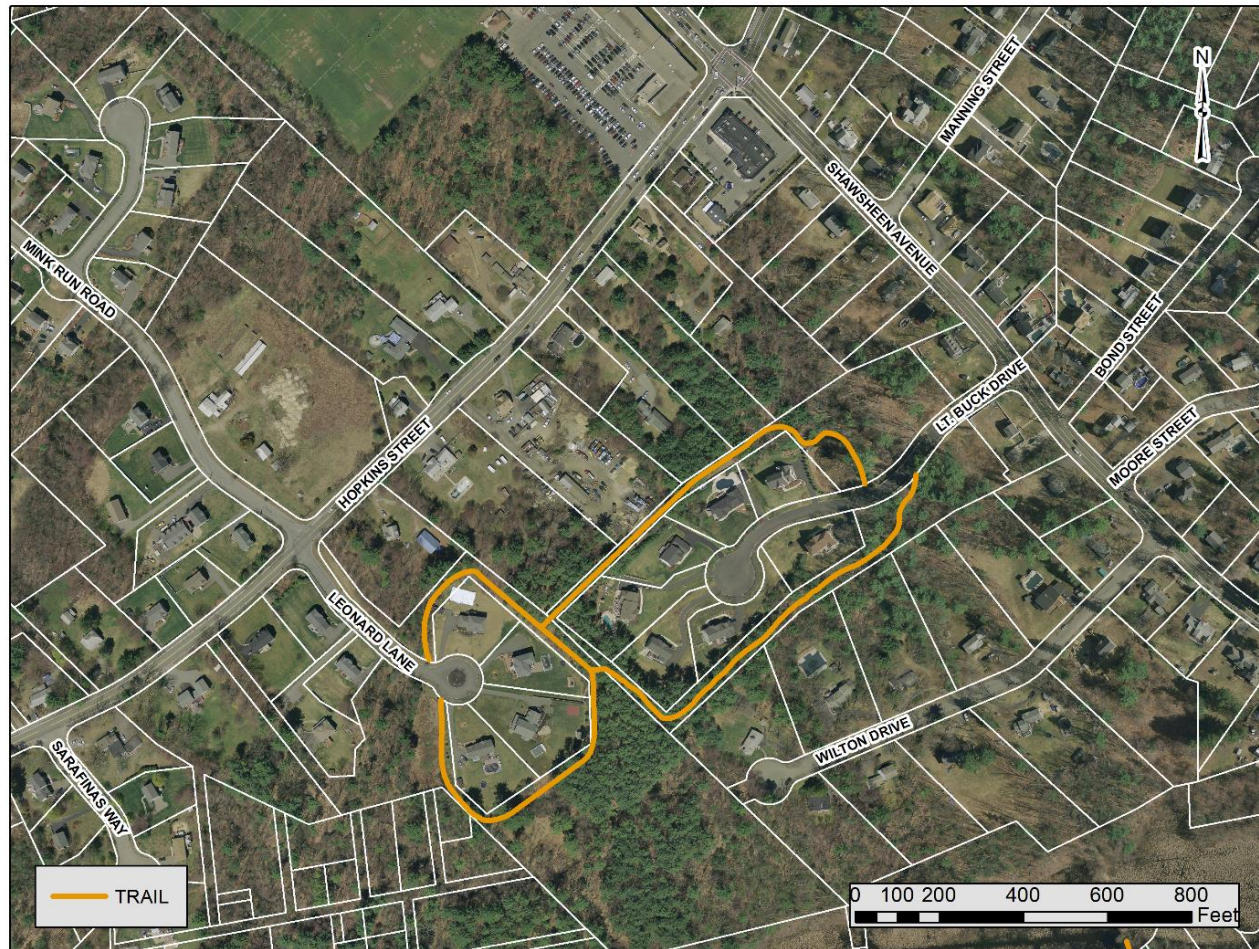


LEONARD LANE & LT. BUCK DR.

Town of Wilmington, MA // Department of Planning & Conservation // WilmingtonMA.gov // (978) 658-8238



LEONARD LANE & LT. BUCK DRIVE

Area: 15 Acres

Activities: Hiking, Nature Observation

Significance: Natural Area

Trail Mileage: 0.4 mile

ABOUT THE PROPERTY

The properties were acquired as part of Conservation Subdivisions.

Conservation Subdivision designs allow for smaller house lots in exchange for more open space for the purposes of protecting important natural features, encouraging less sprawl, and providing green space for public use. Wooded trails connect Leonard Estates and Heritage Pines with more informal paths leading to Lubbers Brook.

ACCESS & PARKING

From Leonard Ln. and Lt. Buck Dr. One designated parking space plus street parking on Leonard Lane. Three parking spaces on Lt. Buck Drive.