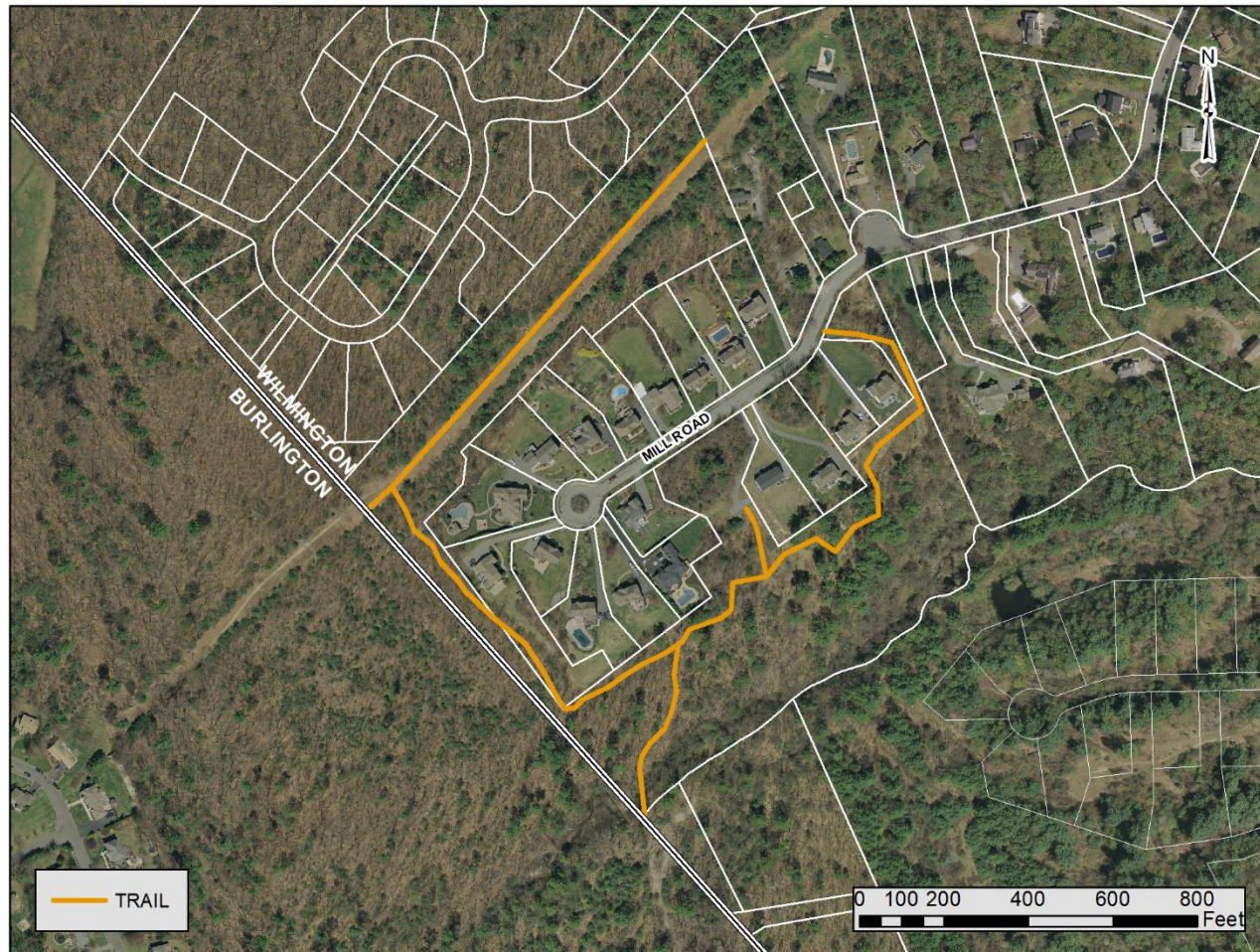


# KYLIE ESTATES

Town of Wilmington, MA // Department of Planning & Conservation // WilmingtonMA.gov // (978) 658-8238



## KYLIE ESTATES

**Area:** 17 Acres

**Activities:** Hiking, Nature Observation,  
Cross-country skiing

**Significance:** Natural Area

**Trail Mileage:** 0.8 mile

## ABOUT THE PROPERTY

This property was acquired by the Town through a Conservation Subdivision. Conservation Subdivision designs allow for smaller house lots in exchange for more open space for the purposes of protecting important natural features, encouraging less sprawl, and providing green space for public use. The trail connects to Saw Mill Brook and to the Saw Mill Brook Conservation Area in Burlington, which is accessible from Fox Hill School in Burlington as well. Trails connect to additional trails at Eleanor Dr. and Green Meadow Dr.

## ACCESS & PARKING

Two trail access points on Mill Rd. Two designated parking spaces and street parking on Mill Rd.