

WILMINGTON HIGH SCHOOL
TRACK RECONSTRUCTION
PROJECT

159 CHURCH STREET
WILMINGTON, MA 01887

PREPARED FOR
TOWN OF WILMINGTON
121 GLEN ROAD
WILMINGTON, MA 01887

DRAWING NO	SHEET NO	TITLE
G001	1 OF 10	COVER SHEET
G002	2 OF 10	GENERAL NOTES SHEET
C001	3 OF 10	EXISTING CONDITIONS PLAN
C002	4 OF 10	DEMOLITION & EROSION CONTROL PLAN
C101	5 OF 10	LAYOUT & MATERIALS PLAN
C201	6 OF 10	GRADING & DRAINAGE PLAN
C301	7 OF 10	SITE UTILITY PLAN
C501	8 OF 10	DETAIL SHEET 1 OF 3
C502	9 OF 10	DETAIL SHEET 2 OF 3
C503	10 OF 10	DETAIL SHEET 3 OF 3



SITE MAP
NOT TO SCALE



LOCATION MAP
NOT TO SCALE



Gale Associates, Inc.
Engineers and Planners
163 LIBBEY PARKWAY | WEYMOUTH, MA
02189P 781.335.6465 F 781.335.6467
www.gainc.com
Boston Baltimore Orlando Hartford Bedford

This drawing and the design and construction features disclosed are proprietary to Gale Associates, Inc. and shall not be altered or reused in whole or part without the express written permission of Gale Associates, Inc. Copyright©2022

BID SET

PROJECT
WILMINGTON HIGH SCHOOL
TRACK RECONSTRUCTION
159 CHURCH STREET
WILMINGTON, MA 01887
OWNER
TOWN OF WILMINGTON, MA
121 GLEN ROAD
WILMINGTON, MA 01887

NO.	DATE	DESCRIPTION	BY
PROJECT NO.	718480		
CADD FILE	718480_G001		
DESIGNED BY	PS / KFR		
DRAWN BY	PS / KFR		
CHECKED BY	BDS / PS		
DATE	3/2/2022		
DRAWING SCALE	N.T.S.		

GRAPHIC SCALE

SHEET TITLE

COVER
SHEET

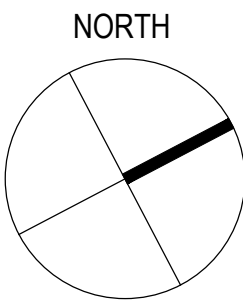
DRAWING NO.

G001

1 OF 10

EXISTING CONDITIONS NOTES:

- ALL EXISTING UTILITY LOCATIONS ARE APPROXIMATE. LOCATIONS SHOWN ARE FROM FIELD OBSERVATION OR RECORD PLANS. OTHER UTILITIES MAY EXIST WHICH ARE NOT SHOWN ON THIS PLAN.
- A PARTIAL EXISTING CONDITIONS SURVEY WAS CONDUCTED BY GALE ASSOCIATES INC. ON NOVEMBER 16 & DECEMBER 14, 2021. NO PROPERTY LINES OR EASEMENTS HAVE BEEN LOCATED.
- HORIZONTAL AND VERTICAL DATUM ARE BASED ON MASSACHUSETTS STATE PLANE (NAD83) AND THE NORTH AMERICAN VERTICAL DATUM (NAVD88) AS PROVIDED BY MaCORS AND MassDOT
- THE RESOURCE AREA FLAGS SHOWN HEREON WERE PLACED BY WETLANDS & LAND MANAGEMENT, INC. ON OCTOBER 8, 2021.



ISOLATED LAND SUBJECT TO FLOODING
WETLAND FLAGS A1 - A26

APPROXIMATE PROPERTY LINE

APPROXIMATE INTERIOR
PROPERTY LINE

EXISTING CONDITIONS LEGEND

- BITUMINOUS PAVEMENT
- GRAVEL / SAND
- TRACK SURFACING
- SYNTHETIC TURF FIELD
- EDGE OF TRACK SURFACING
- LANE OR RUNWAY STRIPING
- 400M MEASURE LINE
- CHAIN LINK FENCE
- 88 ELEVATION CONTOUR
- 88.00 SPOT ELEVATION
- APPROX. PROPERTY LINE
- 25' BUFFER ZONE
- 50' BUFFER ZONE
- 100' BUFFER ZONE
- 200' RIVERFRONT ZONE
- WETLAND BOUNDARY
- RESOURCE AREA FLAG
- DRAIN MANHOLE



Gale Associates, Inc.
Engineers and Planners
163 LIBBEY PARKWAY | WEYMOUTH, MA
02189P 781.335.6465 F 781.335.6467
www.gainc.com
Boston Baltimore Orlando Hartford Bedford

This drawing and the design and construction features disclosed
are proprietary to Gale Associates, Inc. and shall not be altered or
reused in whole or part without the express written permission of
Gale Associates, Inc. Copyright©2022

BID SET

WILMINGTON HIGH SCHOOL
TRACK RECONSTRUCTION
159 CHURCH STREET
WILMINGTON, MA 01887

TOWN OF WILMINGTON, MA
121 GLEN ROAD
WILMINGTON, MA 01887

PROJECT

OWNER

NO.	DATE	DESCRIPTION	BY
PROJECT NO.	718480		
CADD FILE	718480_C001		
DESIGNED BY	PS / KFR		
DRAWN BY	PS / KFR		
CHECKED BY	BDS / PS		
DATE	3/2/2022		
DRAWING SCALE	1" = 30'		

GRAPHIC SCALE

0 30' 60'

SHEET TITLE

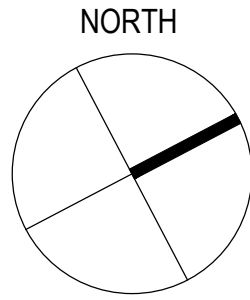
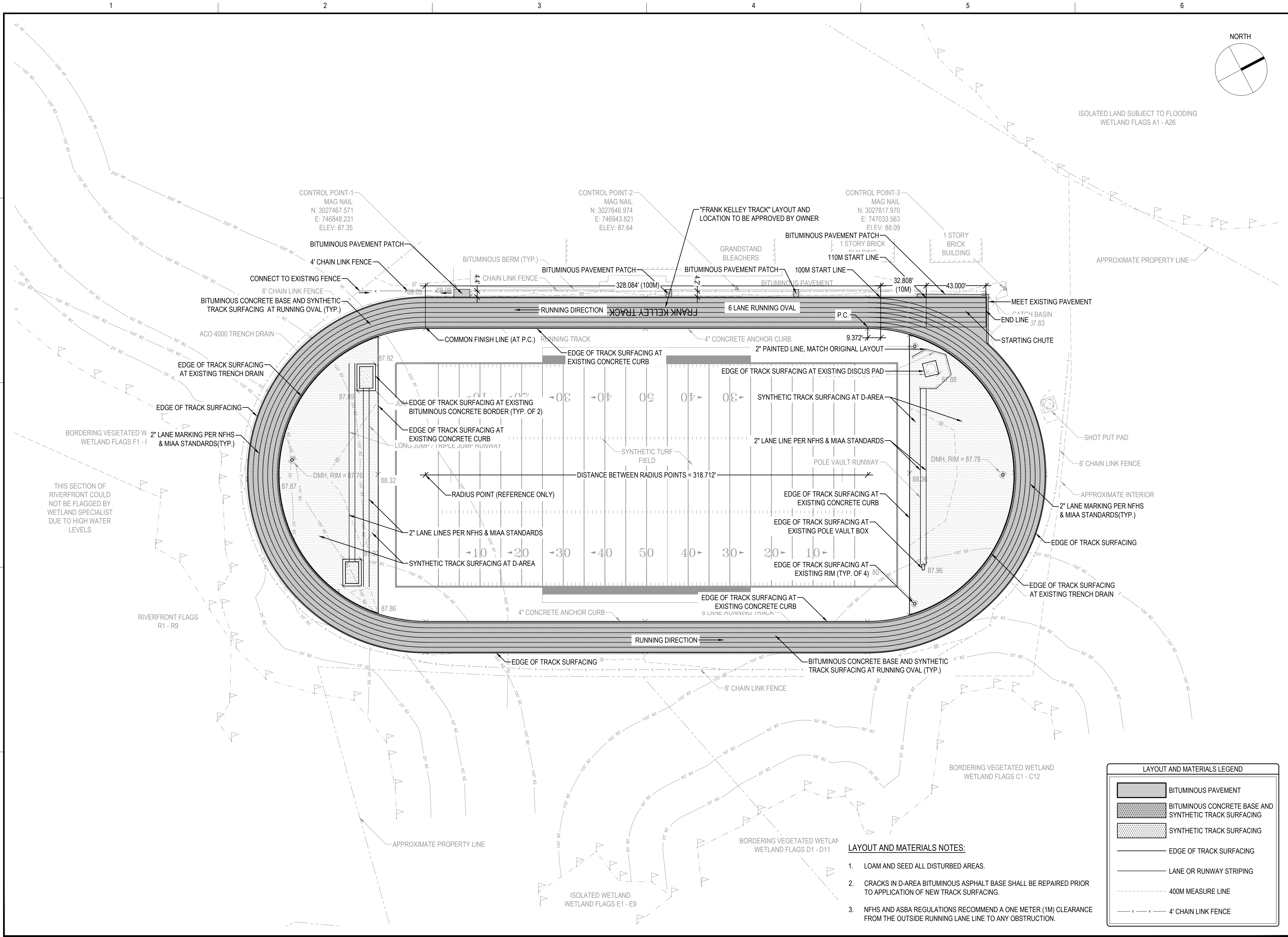
EXISTING
CONDITIONS
PLAN

DRAWING NO.

C001

3 OF 10

F:\1718480 - Wilmington High School\plans\08-Bid Set\01-Bid Plans\1718480_C101.dwg, 3/1/2022 1:37:31 PM, DWG To PDF.p3



Gale Associates, Inc.
Engineers and Planners

163 LIBBEY PARKWAY | WEYMOUTH, MA
02189P 781.335.6465 F 781.335.6467
www.gainc.com

Boston Baltimore Orlando Hartford Bedford

This drawing and the design and construction features disclosed
are proprietary to Gale Associates, Inc. and shall not be altered or
reused in whole or part without the express written permission of
Gale Associates, Inc. Copyright©2022

BID SET

PROJECT
WILMINGTON HIGH SCHOOL
TRACK RECONSTRUCTION
159 CHURCH STREET
WILMINGTON, MA 01887

OWNER
TOWN OF WILMINGTON, MA
121 GLEN ROAD
WILMINGTON, MA 01887

NO.	DATE	DESCRIPTION	BY
PROJECT NO.	718480		
CADD FILE	718480_C101		
DESIGNED BY	PS / KFR		
DRAWN BY	PS / KFR		
CHECKED BY	BDS / PS		
DATE	3/2/2022		
DRAWING SCALE	1" = 30'		

GRAPHIC SCALE



SHEET TITLE

LAYOUT &
MATERIALS
PLAN

DRAWING NO.

C101

5 OF 10

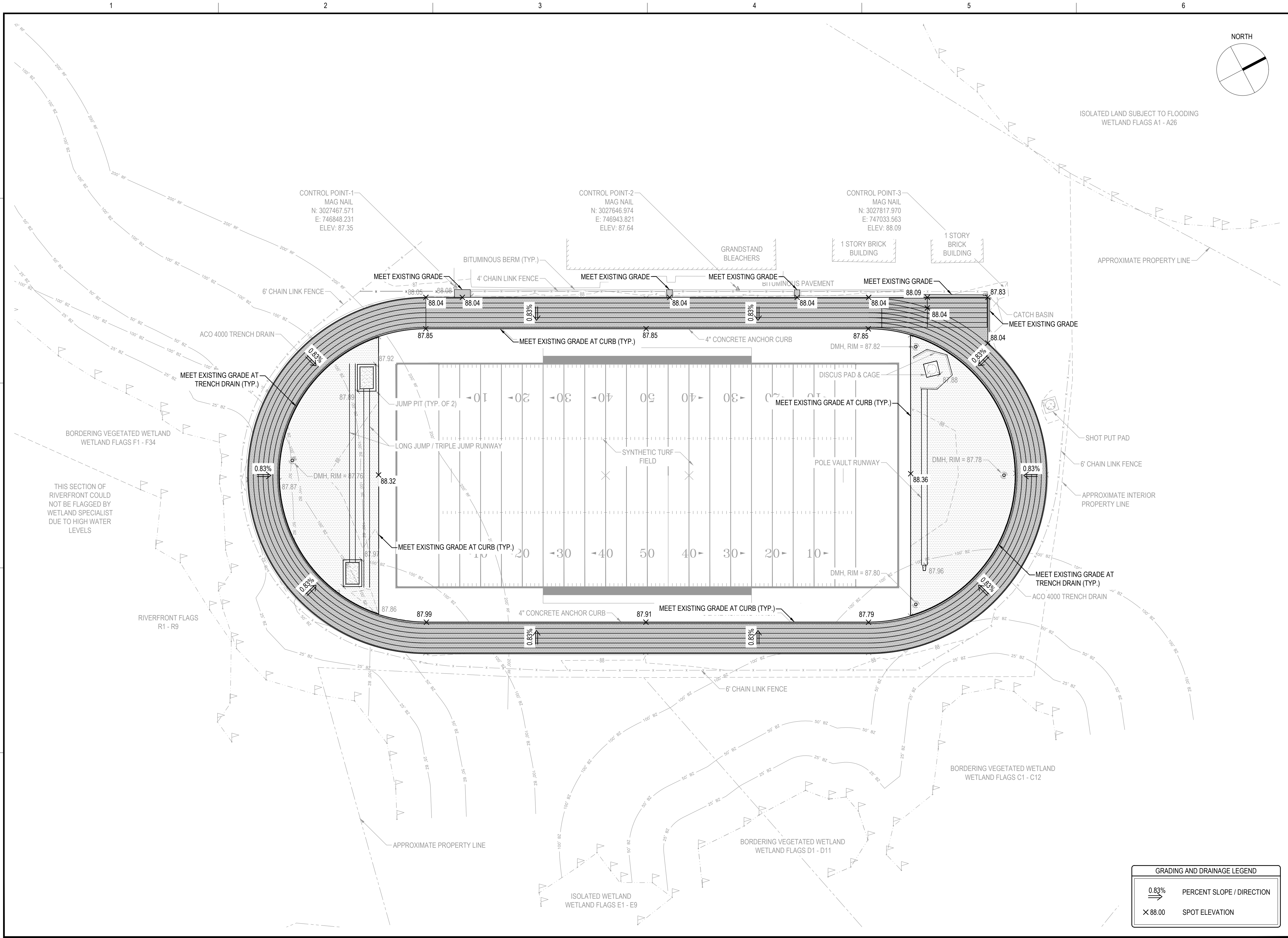
LAYOUT AND MATERIALS LEGEND

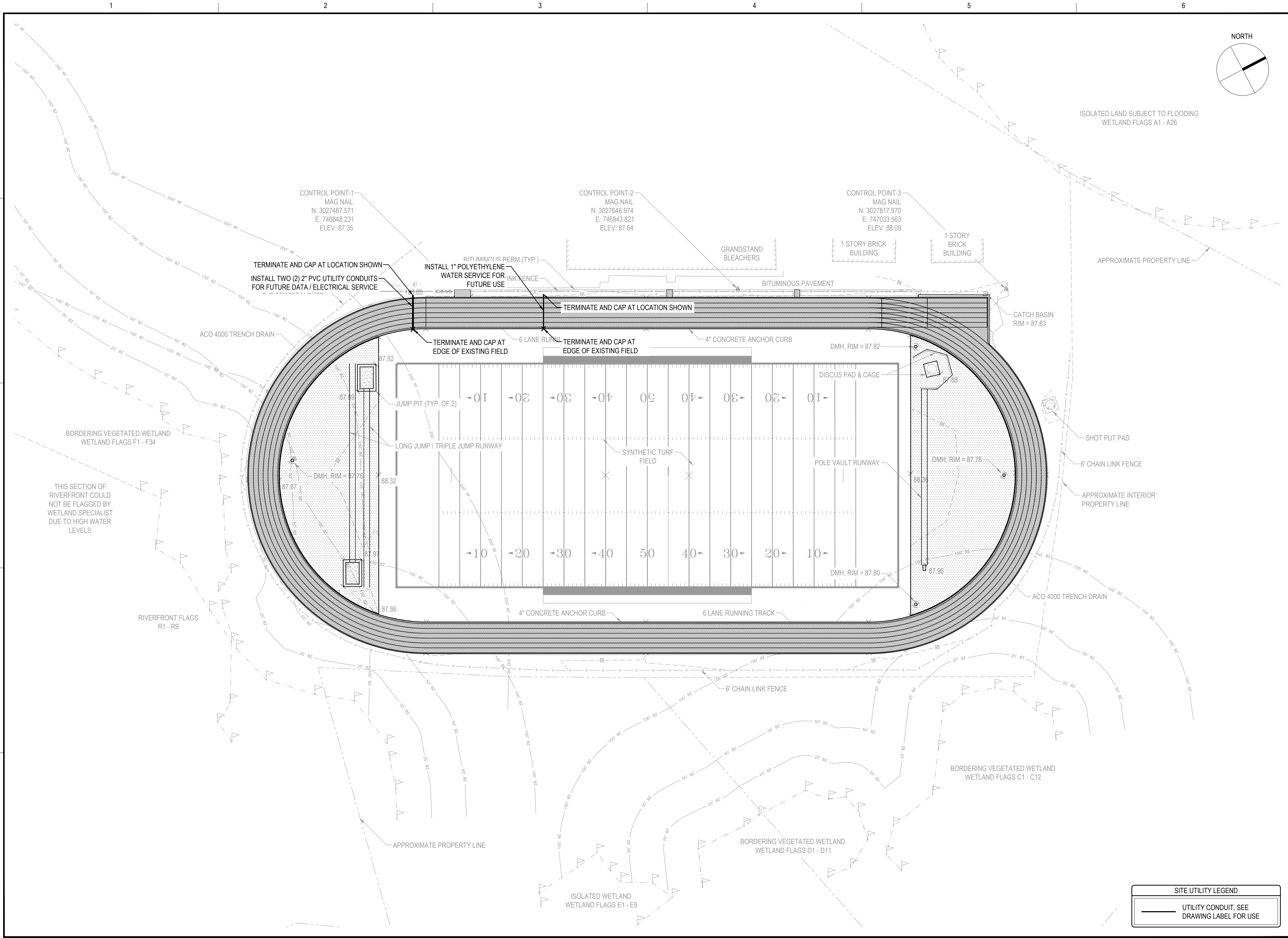
- BITUMINOUS PAVEMENT
- BITUMINOUS CONCRETE BASE AND SYNTHETIC TRACK SURFACING
- SYNTHETIC TRACK SURFACING
- EDGE OF TRACK SURFACING
- LANE OR RUNWAY STRIPING
- 400M MEASURE LINE
- 4' CHAIN LINK FENCE


LAYOUT AND MATERIALS NOTES:

- LOAM AND SEED ALL DISTURBED AREAS.
- CRACKS IN D-AREA BITUMINOUS ASPHALT BASE SHALL BE REPAIRED PRIOR TO APPLICATION OF NEW TRACK SURFACING.
- NFHS AND ASBA REGULATIONS RECOMMEND A ONE METER (1M) CLEARANCE FROM THE OUTSIDE RUNNING LANE LINE TO ANY OBSTRUCTION.

F:\1718480 - Wilmington High School\plans\08-Bid Set\01-Bid Plans\1718480_C201.dwg, 2/28/2022 5:18:37 PM, DWG To PDF.pc3







Gale Associates, Inc.
Engineers and Planners
163 LIBBEY PARKWAY | WEYMOUTH, MA
02189P 781.335.6465 F 781.335.6467
www.gainc.com
Boston Baltimore Orlando Hartford Bedford

This drawing and the design and construction features disclosed are proprietary to Gale Associates, Inc. and shall not be altered or reused in whole or part without the express written permission of Gale Associates, Inc. Copyright © 2022

BID SET

PROJECT

WILMINGTON HIGH SCHOOL
TRACK RECONSTRUCTION
159 CHURCH STREET
WILMINGTON, MA 01887

OWNER

TOWN OF WILMINGTON, MA
121 GLEN ROAD
WILMINGTON, MA 01887

NO.	DATE	DESCRIPTION	BY
PROJECT NO.	718480		
CADD FILE	718480_C301		
DESIGNED BY	PS / KFR		
DRAWN BY	PS / KFR		
CHECKED BY	BDS / PS		
DATE	3/2/2022		
DRAWING SCALE	1" = 30'		

GRAPHIC SCALE

0

30'

60'


SHEET TITLE

SITE
UTILITY
PLAN

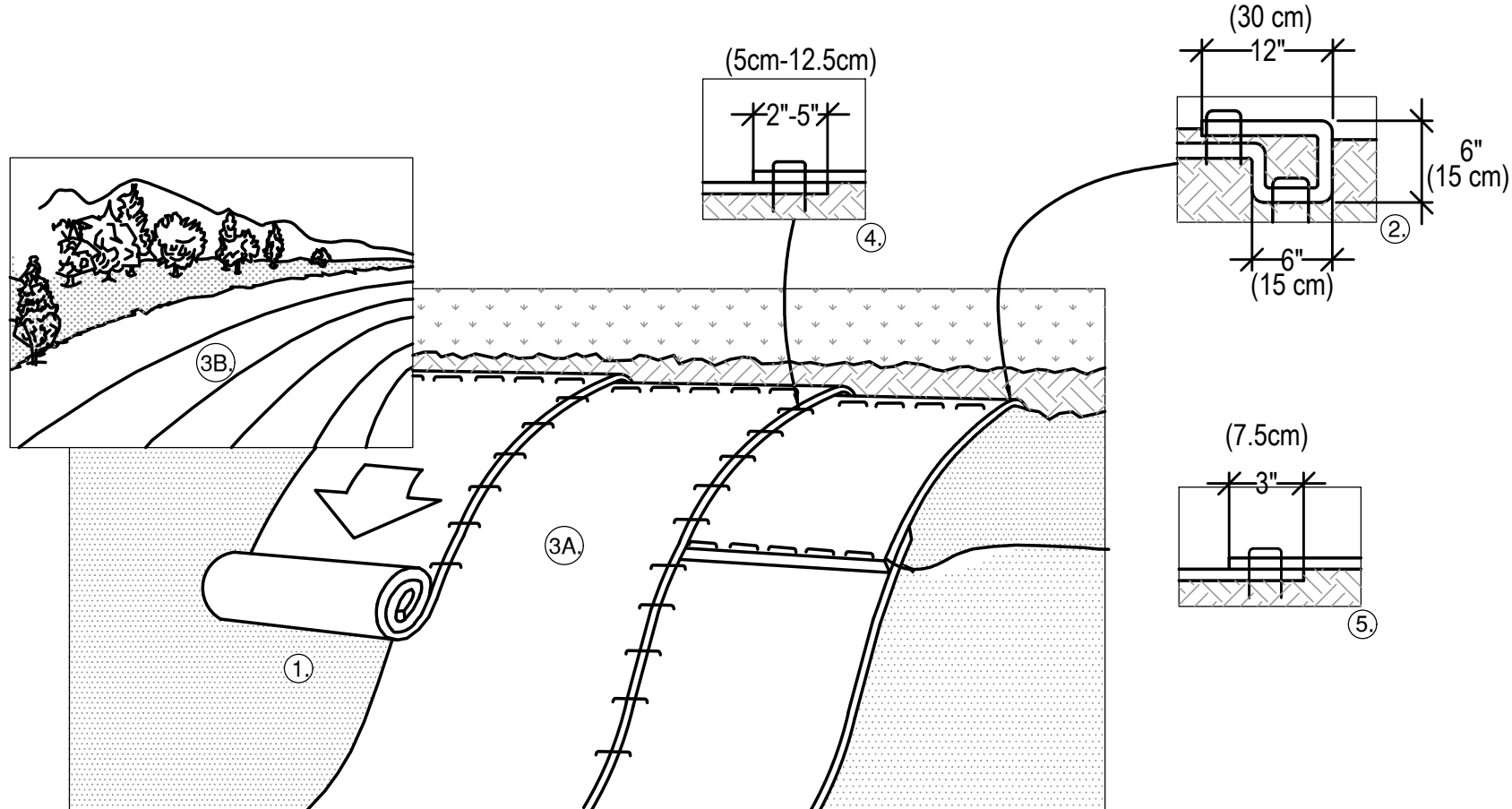
DRAWING NO.

C301

7 OF 10

SITE UTILITY LEGEND	
	UTILITY CONDUIT, SEE DRAWING LABEL FOR USE

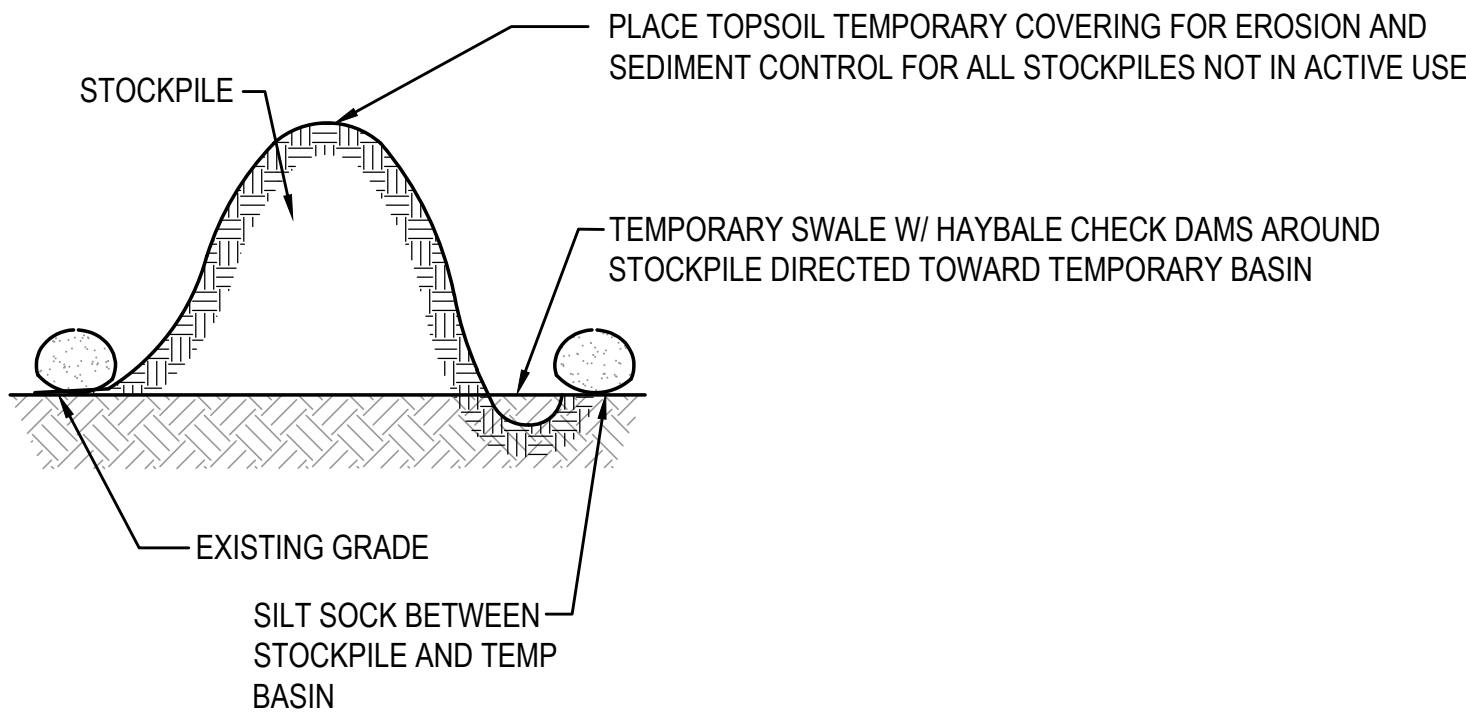
F:\1718480 - Wilmington High School\plans\08-Bid Set\01-Bid Plans\1718480_C501.dwg, 2/28/2022 4:53:09 PM, DWG To PDF.pc3



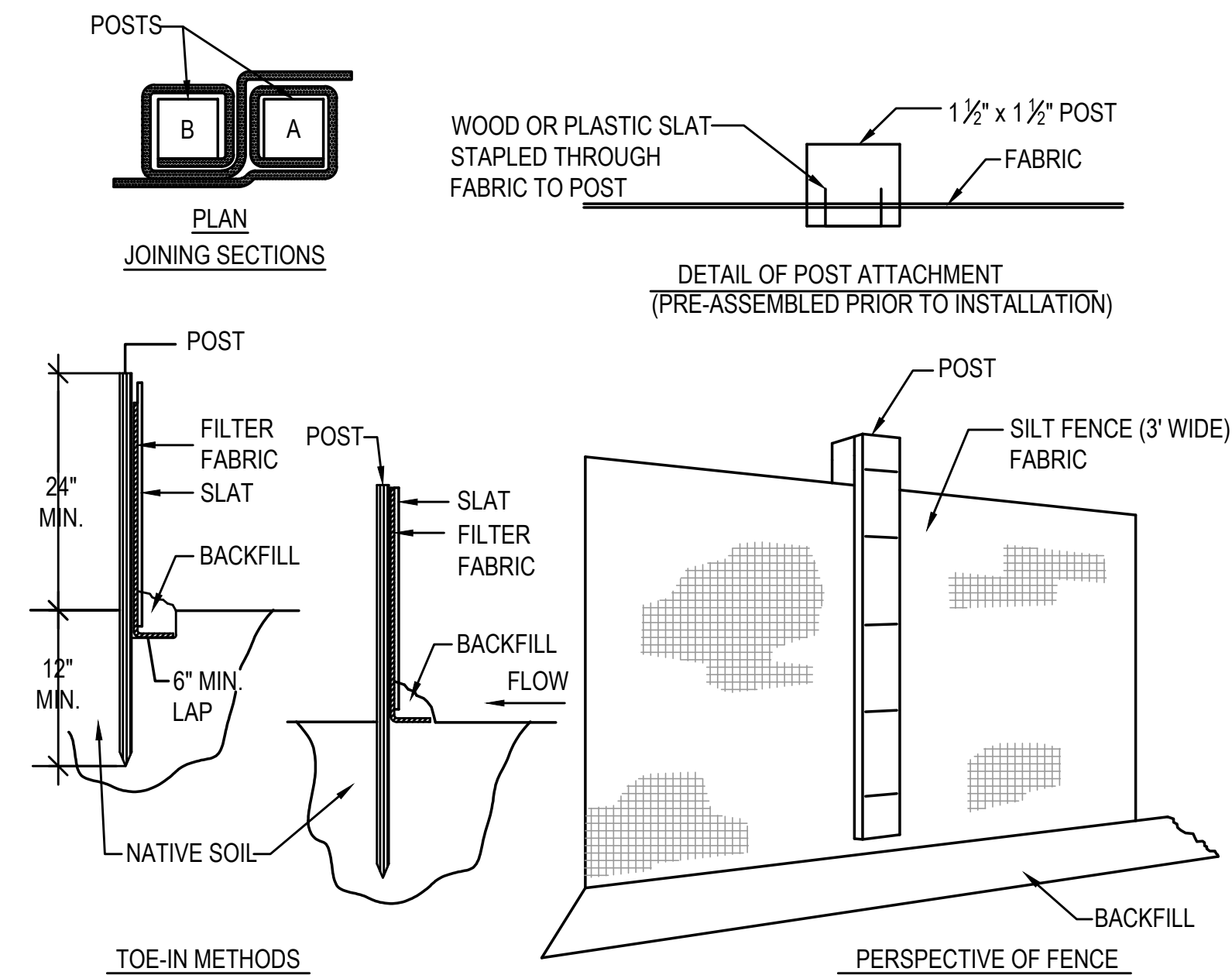
NOTES:

1. PREPARE SOIL BEFORE INSTALLING BLANKETS, INCLUDING ANY NECESSARY APPLICATION OF LIME, FERTILIZER, AND SEED. NOTE: WHEN USING CELL-O-SEED DO NOT SEED PREPARED AREA. CELL-O-SEED MUST BE INSTALLED WITH PAPER SIDE DOWN.
2. BEGIN AT THE TOP OF THE SLOPE BY ANCHORING THE BLANKET IN A 6" (15cm) DEEP X 6" (15cm) WIDE TRENCH WITH APPROXIMATELY 12" (30cm) OF BLANKET EXTENDED BEYOND THE UP-SLOPE PORTION OF THE TRENCH. ANCHOR THE BLANKET WITH A ROW OF STAPLES/STAKES APPROXIMATELY 12" (30cm) APART IN THE BOTTOM OF THE TRENCH. BACKFILL AND COMPACT THE TRENCH AFTER STAPLING. APPLY SEED TO COMPACTED SOIL AND FOLD REMAINING 12" (30cm) PORTION OF BLANKET BACK OVER SEED AND COMPACTED SOIL. SECURE BLANKET OVER COMPACTED SOIL WITH A ROW OF STAPLES/STAKES SPACED APPROXIMATELY 12" (30cm) APART ACROSS THE WIDTH OF THE BLANKET.
3. ROLL THE BLANKETS (A.) DOWN OR (B.) HORIZONTALLY ACROSS THE SLOPE. BLANKETS WILL UNROLL WITH APPROPRIATE SIDE AGAINST THE SOIL SURFACE. ALL BLANKETS MUST BE SECURELY FASTENED TO SOIL SURFACE BY PLACING STAPLES/STAKES IN APPROPRIATE LOCATIONS AS SHOWN IN THE STAPLE PATTERN GUIDE. WHEN USING OPTIONAL DOT SYSTEM, STAPLES/STAKES SHOULD BE PLACED THROUGH EACH OF THE COLORED DOTS CORRESPONDING TO THE APPROPRIATE STAPLE PATTERN.
4. THE EDGES OF PARALLEL BLANKETS MUST BE STAPLED WITH APPROXIMATELY 2"-5" (5cm-12.5cm) OVERLAP DEPENDING ON BLANKET TYPE. TO ENSURE PROPER SEAM ALIGNMENT, PLACE THE EDGE OF THE OVERLAPPING BLANKET (BLANKET BEING INSTALLED ON TOP) EVEN WITH THE COLORED SEAM STITCH ON THE PREVIOUSLY INSTALLED BLANKET.
5. CONSECUTIVE BLANKETS SPliced DOWN THE SLOPE MUST BE PLACED END OVER END (SHINGLE STYLE) WITH AN APPROXIMATE 3" (7.5cm) OVERLAP. STAPLE THROUGH OVERLAPPED AREA, APPROXIMATELY 12" (30cm) APART ACROSS ENTIRE BLANKET WIDTH.

1 EROSION MATTING DETAIL
N.T.S.



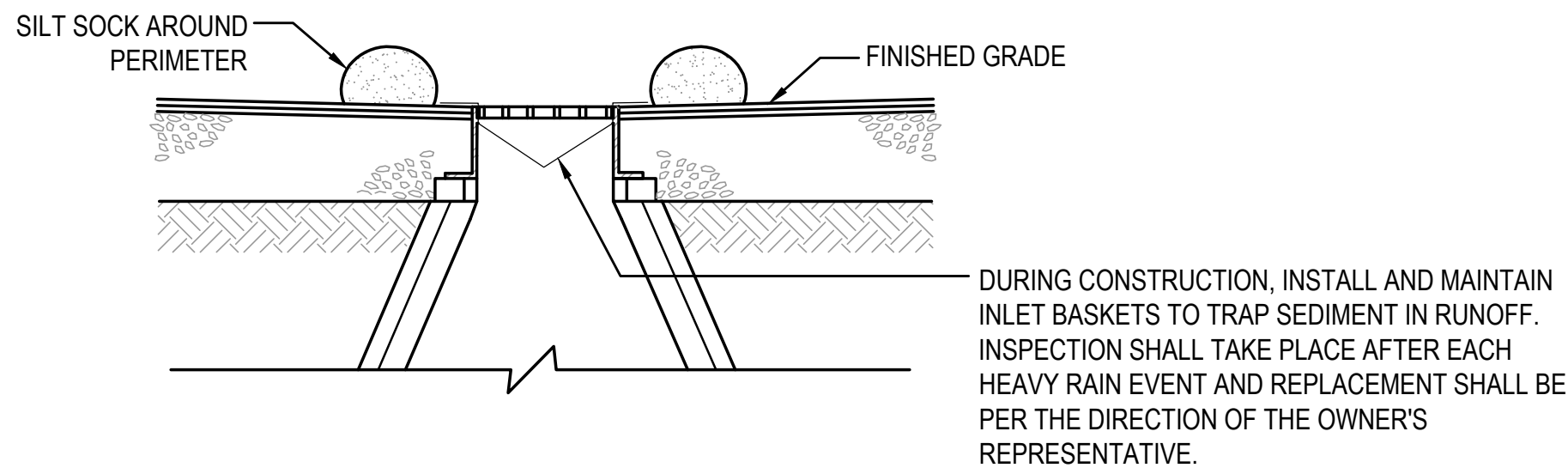
2 MATERIAL STOCKPILE AREA
N.T.S.



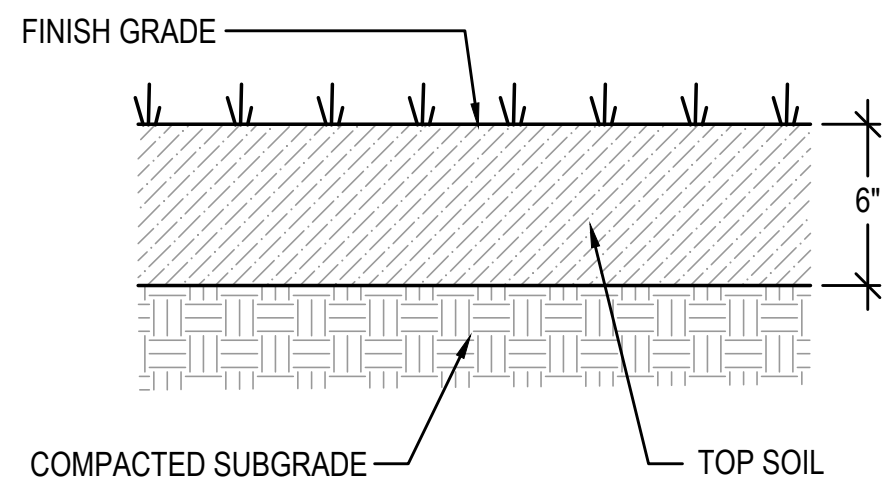
NOTES:

1. EXCAVATE A 6"x6" TRENCH ALONG THE LINE OF EROSION CONTROL OF THE SITE.
2. UNROLL SILTATION FENCE AND POSITION THE POSTS AGAINST THE BACK (DOWNSTREAM) WALL OF THE TRENCH (NET SIDE AWAY FROM FLOW DIRECTION).
3. DRIVE THE POST INTO THE GROUND UNTIL THE NETTING IS LAYING ACROSS THE TRENCH BOTTOM.
4. LAY THE TOE-IN FLAP OF THE FABRIC ONTO THE UNDISTURBED BOTTOM OF THE TRENCH, BACKFILL THE TRENCH AND TAMP THE SOIL. TOE-IN CAN ALSO BE ACCOMPLISHED BY LAYING FABRIC FLAP ON UNDISTURBED GROUND AND PILING & TAMPING FILL AT THE BASE.

3 SILTATION FENCE
N.T.S.



4 INLET PROTECTION / SILT SACK
N.T.S.



5 LOAM & SEED DISTURBED AREAS
N.T.S.



Gale Associates, Inc.
Engineers and Planners

163 LIBBEY PARKWAY | WEYMOUTH, MA
02189P 781.335.6465 F 781.335.6467
www.gainc.com

Boston Baltimore Orlando Hartford Bedford

This drawing and the design and construction features disclosed are proprietary to Gale Associates, Inc. and shall not be altered or reused in whole or part without the express written permission of Gale Associates, Inc. Copyright©2022

BID SET

PROJECT	WILMINGTON HIGH SCHOOL TRACK RECONSTRUCTION 159 CHURCH STREET WILMINGTON, MA 01887
	TOWN OF WILMINGTON, MA 121 GLEN ROAD WILMINGTON, MA 01887

NO.	DATE	DESCRIPTION	BY
PROJECT NO.	718480		
CADD FILE	718480_C501		
DESIGNED BY	PS / KFR		
DRAWN BY	PS / KFR		
CHECKED BY	BDS / PS		
DATE	3/2/2022		
DRAWING SCALE	N.T.S.		

GRAPHIC SCALE

SHEET TITLE

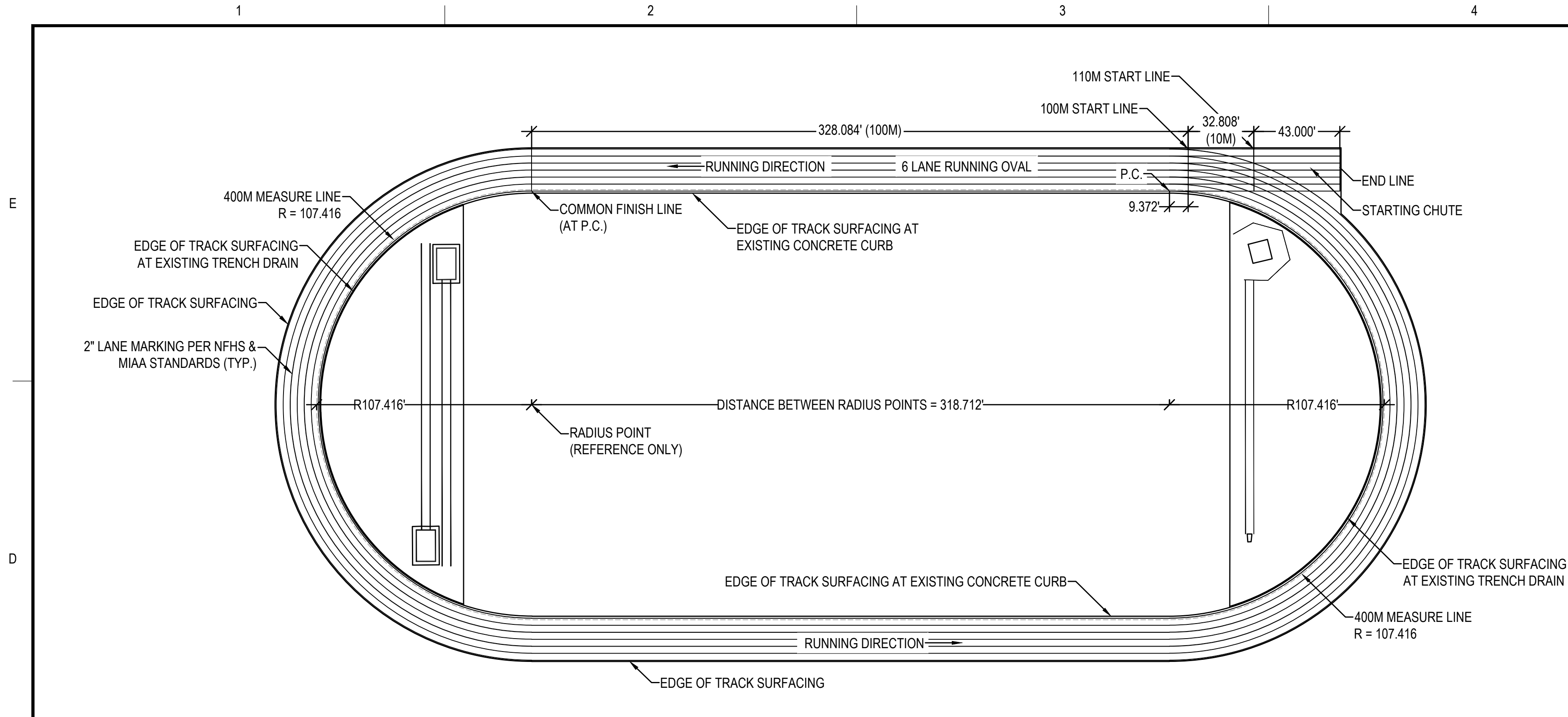
DETAIL
SHEET
1 OF 3

DRAWING NO.

C501

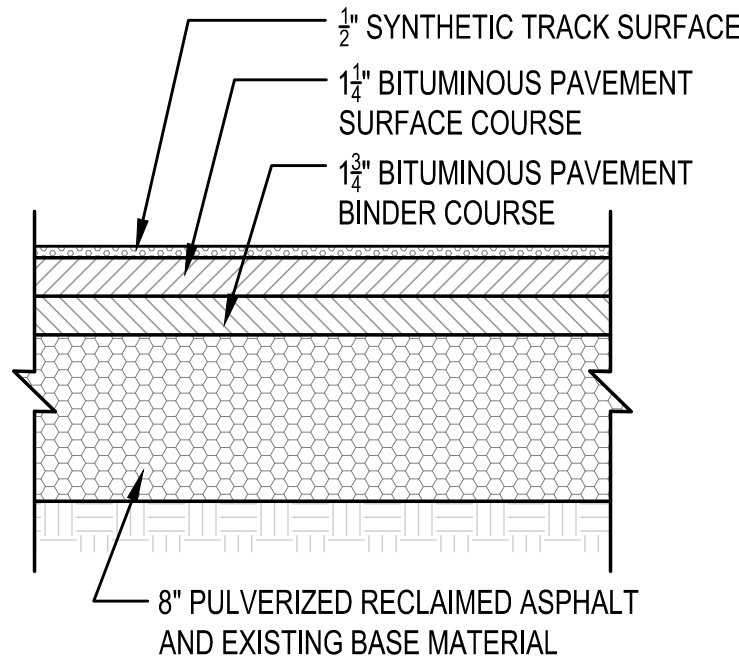
8 OF 10

F:\1718480 - Wilmington High School\plans\08-Bid Set\01-Bid Plans\1718480_C501.dwg, 2/28/2022 4:54:22 PM, DWG To PDF.pc3



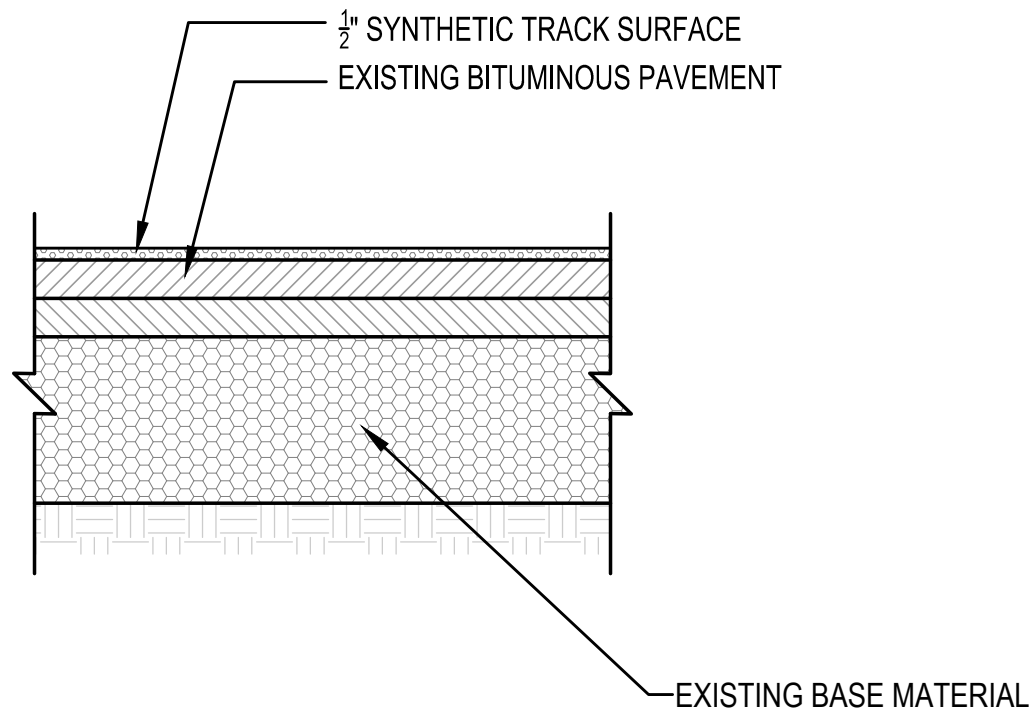
NOTE:

- CONTRACTOR TO SUPPLY A COLORED TRACK STRIPING PLAN ACCORDING TO NATIONAL FEDERATION OF HIGH SCHOOL SPORTS (NFHS) AND AMERICAN SPORTS BUILDERS ASSOCIATION (ASBA) STANDARDS FOR OWNER APPROVAL. TO INCLUDE DUAL COLOR LANE NUMERALS, HURDLE RACES AND ALL RELAY RACES, 1 MILE AND 2 MILE EVENTS, AND ALL OTHER RECOMMENDED MARKINGS. NO STRIPING SHALL TAKE PLACE UNTIL CONTRACTOR HAS RECEIVED APPROVED STRIPING PLAN.



NOTE:

- EXISTING PAVEMENT TO BE RECLAIMED TO A DEPTH OF 11" (3" ASPHALT, 8" OF EXISTING BASE), BLENDED MATERIAL SHALL BE COMPACTED, LASER GRADED, AND PREPARED TO RECIEVE NEW ASPHALT. CONTRACTOR SHALL SUPPLEMENT WITH ADDITIONAL BASE MATERIAL AS NECESSARY TO ACHIEVE PROPER COMPACTION AND GRADING.
- EXCESS OVERBURDEN SHALL BE REMOVED FROM THE SITE.



Gale Associates, Inc.
Engineers and Planners

163 LIBBEY PARKWAY | WEYMOUTH, MA
02189P 781.335.6465 F 781.335.6467
www.gainc.com

Boston Baltimore Orlando Hartford Bedford

This drawing and the design and construction features disclosed are proprietary to Gale Associates, Inc. and shall not be altered or reused in whole or part without the express written permission of Gale Associates, Inc. Copyright©2022

BID SET

PROJECT
WILMINGTON HIGH SCHOOL
TRACK RECONSTRUCTION
159 CHURCH STREET
WILMINGTON, MA 01887

OWNER
TOWN OF WILMINGTON, MA
121 GLEN ROAD
WILMINGTON, MA 01887

NO.	DATE	DESCRIPTION	BY
PROJECT NO.	718480		
CADD FILE	718480_C501		
DESIGNED BY	PS / KFR		
DRAWN BY	PS / KFR		
CHECKED BY	BDS / PS		
DATE	3/2/2022		
DRAWING SCALE	N.T.S.		

GRAPHIC SCALE

SHEET TITLE

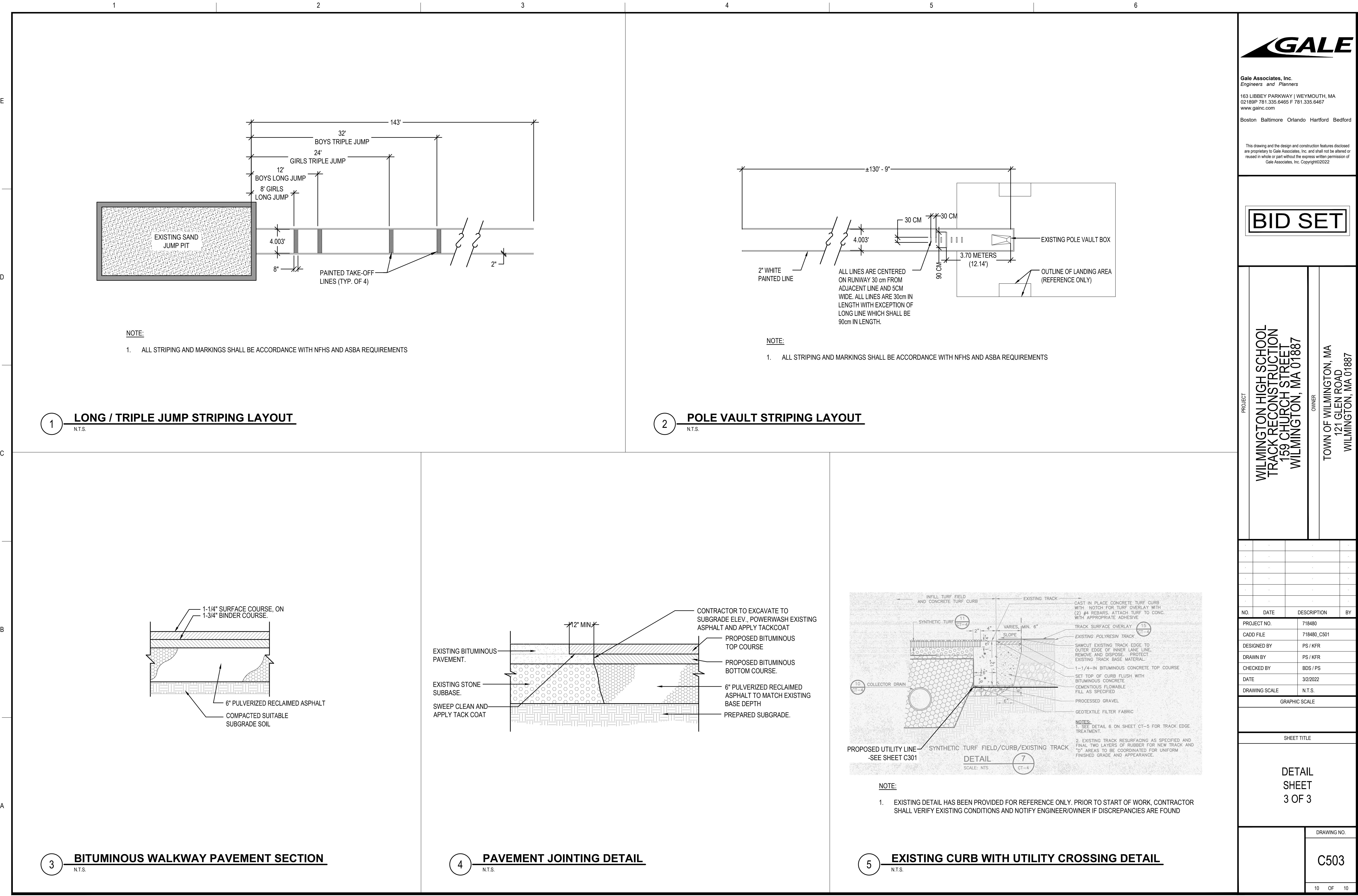
DETAIL
SHEET
2 OF 3

DRAWING NO.

C502

9 OF 10

F:\1718480 - Wilmington High School\plans\08-Bid Set\01-Bid Plans\1718480_C501.dwg, 2/28/2022 4:59:13 PM, DWG To PDF.pc3



Gale Associates, Inc.
Engineers and Planners
163 LIBBEY PARKWAY | WEYMOUTH, MA
02189P 781.335.6465 F 781.335.6467
www.gainc.com
Boston Baltimore Orlando Hartford Bedford

This drawing and the design and construction features disclosed are proprietary to Gale Associates, Inc. and shall not be altered or reused in whole or part without the express written permission of Gale Associates, Inc. Copyright©2022

BID SET

PROJECT
**WILMINGTON HIGH SCHOOL
TRACK RECONSTRUCTION
159 CHURCH STREET
WILMINGTON, MA 01887**

OWNER
**TOWN OF WILMINGTON, MA
121 GLEN ROAD
WILMINGTON, MA 01887**

NO.	DATE	DESCRIPTION	BY
PROJECT NO.	718480		
CADD FILE	718480_C501		
DESIGNED BY	PS / KFR		
DRAWN BY	PS / KFR		
CHECKED BY	BDS / PS		
DATE	3/2/2022		
DRAWING SCALE	N.T.S.		

GRAPHIC SCALE

SHEET TITLE
**DETAIL
SHEET
3 OF 3**

DRAWING NO. C503
10 OF 10