



# Senior Center Building Project



To the Residents of Wilmington,

VOLUME 7  
JUNE 2022

In the month since the April Town Meeting, the Building Committee has met twice. They have made some important design decisions!

After extensive research, development, and presentation by the Design Team, the Senior Center Building Committee selected the location on the site where the building will be positioned. This is a significant decision! With this significant decision, the Design Team is able to finalize the overall concept of the design of the building. This concept includes the total square footage, the general shape and massing of the building, general locations of entrances and hallways, and the orientation of the parking lot. The Committee made progress by selecting general ideas for the building and the Designer was tasked with presenting several designs with different building materials and exterior concept designs.

## Senior Center Building Committee picks a design concept



For more information, go to the project web page [wilmingtonma.gov/projects](http://wilmingtonma.gov/projects)

The options presented to the Committee by the Designer were:

### Exterior Materials

#### Exterior Siding

- Fiber Cement Siding
- Prefinished / Painted Trim
- Stucco

#### Masonry

- Precast Concrete
- Field Stone
- Brick

#### Roofing Material

- Asphalt Shingle Roof
- Standing Seam Metal

#### Windows – Insulated

- Aluminum
- Wood
- Fiberglass

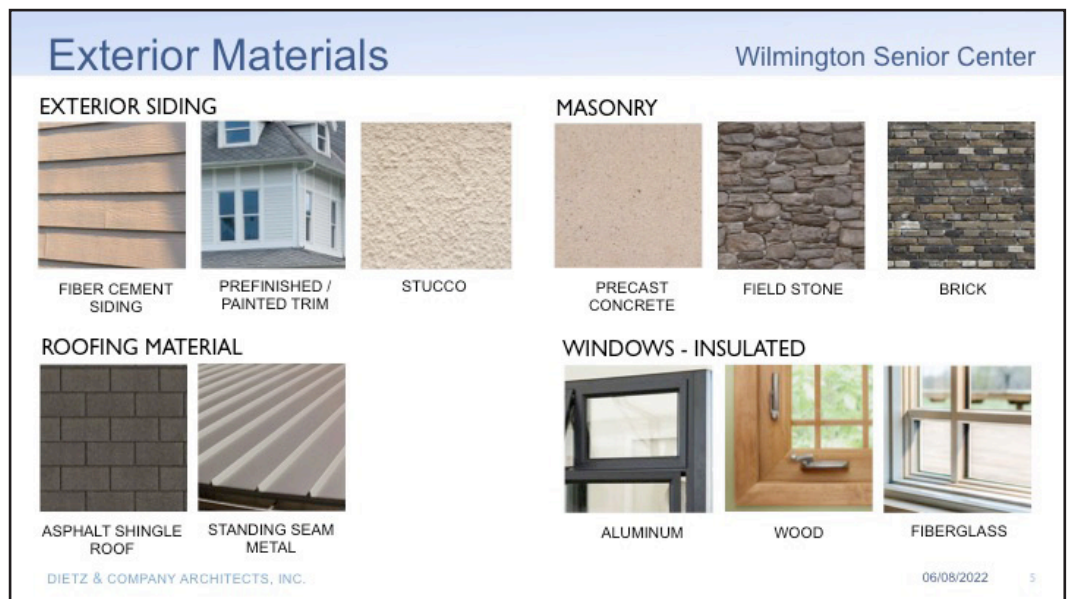


Image from the Dietz & Company  
Architects Presentation



# Senior Center Building Project



VOLUME 7  
JUNE 2022

## HVAC Systems

- Variable Refrigerant Flow (VRF) Heat Pump System
- Condensing Gas Boilers with DX Cooling
- Condensing Gas Boilers with Chiller

After discussion, the Committee has selected white clapboards and trim over field stone for the exterior materials, VRF with air source heat pump for the HVAC system (which reduces CO<sub>2</sub> emissions!), and a wood frame structure with mass timber (engineered wood) and stud framing.

As we've discussed previously, this has all taken place in the Schematic Design phase. To review, Schematic Design produces Preliminary Site Plan, Preliminary Floor Plans, Preliminary Exterior designs. As we move into Design Development, the floor plans and exterior concepts are approved. The Design Team will begin producing detailed drawings and we will get our first cost estimation!

Thank you to all the community members and abutters who came out to the public information session before the June 8th Senior Center Building Committee Meeting. We appreciate the time and effort it takes to be an active participant in Town projects.

