



# Wilmington, Massachusetts

INTER-DEPARTMENTAL COMMUNICATION


FROM THE TOWN MANAGER

November 23, 2022

TO: Board of Selectmen

RE: Tennis Courts and Ballfields Lease Agreement

I have been working with Shirin Everett, Esq., from Town Counsel's office, to finalize a draft lease agreement to provide to the representative from National Development. My goal is to finalize the draft and issue it to National Development by mid-December. The expectation is that counsel from National Development will work with Town Counsel to reach tentative agreement on language that can be recommended to the Board of Selectmen for execution of a lease agreement.

  
Jeffrey M. Hull  
Town Manager



# Wilmington, Massachusetts

INTER-DEPARTMENTAL COMMUNICATION

FROM THE TOWN MANAGER

November 23, 2022

TO: Board of Selectmen

RE: 64 Wildwood Street

Bids were opened on October 26<sup>th</sup> for demolition of the house on 64 Wildwood Street. The project was awarded to Brighter Horizons Environmental, Inc. for \$32,500 for this demolition. A contract was executed on November 8, 2022. The contractor agreed to hold off on beginning the project until the week of November 28<sup>th</sup> to allow the Fire Department to use the house for training. Chief Cavanaugh reported that training was conducted the week of November 17<sup>th</sup>.

The contractor pulled the demolition permit application. An exterminator was hired to address any rodent issues and a "clean" asbestos containing materials (ACM) report was obtained, which is a requirement of the Health Department. Arrangements were made to have power service disconnected. Next week the contractor is expected to pull the underground oil tank and obtain a sign-off from the Fire Department. The work consists of demolition of the house and the shed outbuilding, removal of all debris, removal of the foundation and filling the cellar hole with clean material supplied by the Town. Weather permitting, the contractor's work is expected to be completed by December 15<sup>th</sup>. Public Works will restore the area to previous ground cover until such time that the site can be permitted for future regrading and the layout of new cemetery plots.

  
Jeffrey M. Hull  
Town Manager

cc: Jamie Magaldi, Public Works Director



WILMINGTON PUBLIC SCHOOLS  
161 Church Street | Wilmington, MA 01887  
Tel: (978) 694-6000 Fax: (978) 694-6005



Town Of Wilmington  
121 Glen Road Street | Wilmington, MA 01887  
Tel: (978)-658-3311 Fax: (978) 978-658-3334

TO: Board of Selectmen/School Committee/Finance Committee  
FROM: Glenn Brand/Jeff Hull  
DATE: November 23, 2022  
RE: Update on MSBA Wildwood School Project

---

The first step in completing a feasibility study for school space to replace the current Wildwood School is the engagement of an owner's project manager (OPM). As with the senior center and town hall/school administration projects an OPM is required for projects costing \$1.5 million or greater. The OPM is a requirement for participation in the Massachusetts School Building Authority (MSBA) program and serves as the town's representative in dealing with the designer and contractor for building construction projects.

Eight (8) firms submitted proposals to serve as the OPM for the Wildwood School project by the October 19, 2022, deadline. Each of the eight firms met the minimum requirements to qualify for consideration as the Town's OPM. The firms are:

- Atlantic Construction
- CHA
- Collier Project Group
- Hill International
- Leftfield
- P3 Project Planning
- SMMA
- TERVA Corporation

In accordance with the MSBA requirements a subcommittee of the Wildwood School Building Committee was convened to review the proposals and shortlist the proponents for purposes of conducting interviews. The following individuals accompanied me in serving on the subcommittee:

- Glenn Brand, School Superintendent
- Paul Ruggiero, Assistant Superintendent of Administration & Finance
- Melissa Plowman, School Committee member
- Greg Bendel, Select Board member
- George Hooper, Public Buildings Superintendent
- Marianne Gallezzo, Finance Committee member

The eight firms were scored by each subcommittee member based upon several criteria including: (1) past performance; (2) knowledge of the Massachusetts State Building Code and Americans with

Disabilities Act, (3) knowledge of Massachusetts construction procurement law and (4) management approach to the project.

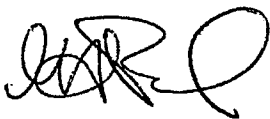
The firms Collier Project Leaders, Hill International and SMMA were shortlisted for interviews by the subcommittee. Following interviews each subcommittee member scored the three finalists which led to SMMA of Cambridge being ranked as the preferred firm and recommended to serve as the OPM. Upon meeting with representatives from the firm a lump sum fee of \$150,000 for the feasibility study and schematic design and \$35,000 for cost estimating services was negotiated.

An extensive package of information describing the procurement and selection process was prepared and submitted to the Massachusetts School Building Authority (MSBA) so that the selection of SMMA can be considered at the MSBA OPM Review Panel meeting on December 5, 2022.

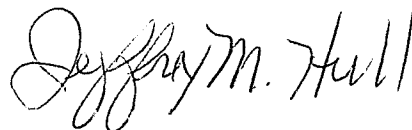
The Town will receive a formal invitation shortly from the MSBA to participate in a virtual meeting via Zoom with the OPM Review Panel. Typically elected officials and administrative personnel from the community seeking the OPM join the meeting. The Town's MSBA representative will request a list of individuals representing the Town who wish to participate. If you are interested in receiving a Zoom invite from the MSBA please notify Beverly Dalton, Administrative Assistant, by November 30<sup>th</sup> at noon.

Following introductions, the town's MSBA contact will provide an overview of the project then ask SMMA to provide a 15-minute presentation. MSBA panelists may ask questions of SMMA or Town representatives. A few days following the close of the meeting the Town is expected to receive a letter from MSBA authorizing that the contract for services with SMMA be executed.

The first major task of the OPM will be to work with the Town and the MSBA to draft a Request for Services (RFS) for designer services. This document, in draft form, will be vetted by the MSBA before public notice can be issued seeking proposals. Once the designer is selected the work to evaluate several options for accommodating elementary school students will commence.



Glenn Brand  
Superintendent of Schools



Jeffrey Hull  
Town Manager

**From:** Gray, Charlotte <[gray.charlotte@epa.gov](mailto:gray.charlotte@epa.gov)>  
**Sent:** Wednesday, September 21, 2022 2:00 PM  
**To:** Jeff Hull <[jhull@wilmingtonma.gov](mailto:jhull@wilmingtonma.gov)>; [boh@willmingtonma.gov](mailto:boh@willmingtonma.gov)  
**Cc:** Kelly, Christopher <[kelly.christopher@epa.gov](mailto:kelly.christopher@epa.gov)>; MORASH, MELANIE <[morash.melanie@epa.gov](mailto:morash.melanie@epa.gov)>;  
Brooks, Ashlin <[Brooks.Ashlin@epa.gov](mailto:Brooks.Ashlin@epa.gov)>  
**Subject:** [EXTERNAL] September Community Update for Olin

Dear Jeff and Shelly,

EPA has finalized the quarterly community update for September, attached here as a PDF. The outreach methods for this document will be email, posting to the web, hard copy mailing, and sharing with the Wilmington Town Crier, the Wilmington Apple, and WCTV.

At our last site update meeting you mentioned that it was ok to contact John O'Neil directly about posting to the BOH website and the Town's social media. If this is still ok, I will reach out to John with the community update to get it on the website. Also, could you please share this update with the Selectboard? If you need it in another format, I am happy to change it for you.

Sincerely,

**Charlotte Gray**

(617)872-9012- Cell

(617)918-1243 – Main

USEPA Region 1 - Office of Public Affairs

5 Post Office Square, Suite 100

Boston, MA 02109

Pronouns: She, her, hers

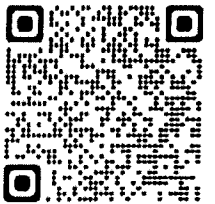




## Community Update (Sept. 2022)

### *Olin Chemical Superfund Site - Wilmington, Mass.*

- This past spring, EPA conducted a series of interviews to further understand community members' concerns. The feedback received will help inform the Agency's Community Involvement Plan (CIP), which will guide EPA's community involvement process. EPA aims to have a draft CIP completed this fall for public review and comment.
- Under EPA oversight, Olin collected additional data to fill data gaps. Such data helps determine the depth and shape of bedrock, ultimately improving the effectiveness of future remediation. This data is currently being evaluated. Additional data collection will occur in spring 2023.
- In May, Olin began a study to evaluate treatment options for groundwater contaminated with "Dense Aqueous Phase Liquid" ("DAPL"). Olin collected and mixed 200 gallons of contaminated groundwater and DAPL for use in the study. In August, EPA and MassDEP approved Olin's proposal to move forward with treatability testing on the DAPL/groundwater mixture.
- EPA and MassDEP continue negotiations with the Potentially Responsible Parties (PRPs) for the site, with the goal of reaching an agreement (a Consent Decree) to conduct or finance the cleanup actions selected in EPA's March 2021 Record of Decision.



For more information, please contact:  
Charlotte Gray  
EPA Community Involvement Coordinator  
(617) 918-1243  
gray.charlotte@epa.gov  
[www.epa.gov/superfund/olin](http://www.epa.gov/superfund/olin)



SEMS Doc ID: 100021915

**From:** Gray, Charlotte <[gray.charlotte@epa.gov](mailto:gray.charlotte@epa.gov)>

**Sent:** Thursday, November 17, 2022 10:15 AM

**To:** Gray, Charlotte <[gray.charlotte@epa.gov](mailto:gray.charlotte@epa.gov)>

**Cc:** Kelly, Christopher <[kelly.christopher@epa.gov](mailto:kelly.christopher@epa.gov)>; Morash, Melanie <[morash.melanie@epa.gov](mailto:morash.melanie@epa.gov)>

**Subject:** [EXTERNAL] Olin Chemical Superfund Site: Public Comment Period

Good morning,

I am pleased to announce that EPA has completed a draft Community Involvement Plan for the Olin Chemical Superfund Site and is holding a public comment period from **November 17<sup>th</sup> to midnight December 15<sup>th</sup>, 2022**.

A CIP is a site-specific strategy to enable meaningful community involvement throughout the Superfund cleanup process. CIPs, which are required by the National Oil and Hazardous Substances Pollution Contingency Plan, specify EPA-planned community involvement activities to help communities understand: (1) the Superfund cleanup process; (2) how, when, and where EPA will provide site-related information to the public; (3) how the public can be actively involved in the cleanup process; and (4) the key points in the cleanup process and the ways in which EPA takes public input into consideration during interim and final decisions. The CIP reflects community needs, concerns, and expectations that are identified through community interviews and other means.

The CIP is both a document and the culmination of a planning process. As such, the CIP provides the backbone of the community involvement program and serves as a useful resource that the site team often turns to during the Superfund cleanup for advice on appropriate activities for community involvement. The CIP will be revised and updated when site or community conditions significantly change from what EPA initially planned.

The draft of the CIP can be found here: [Draft Community Involvement Plan](#)

**Comments can be submitted in writing by email or mail to Charlotte Gray by midnight December 15th.**

Mailed comments should be sent to:

Charlotte Gray  
5 Post Office Square, ORA-01  
Boston, MA  
02109

Emailed comments can be sent to:

[gray.charlotte@epa.gov](mailto:gray.charlotte@epa.gov)

Please reach out to Charlotte Gray ([gray.charlotte@epa.gov](mailto:gray.charlotte@epa.gov) or 617-918-1243) if you have any questions or if you would like a printed copy of the CIP mailed to your home. The CIP will be finalized after the conclusion of the public comment period.

Sincerely,

**Charlotte Gray**

(617)872-9012- Cell

(617)918-1243 – Main

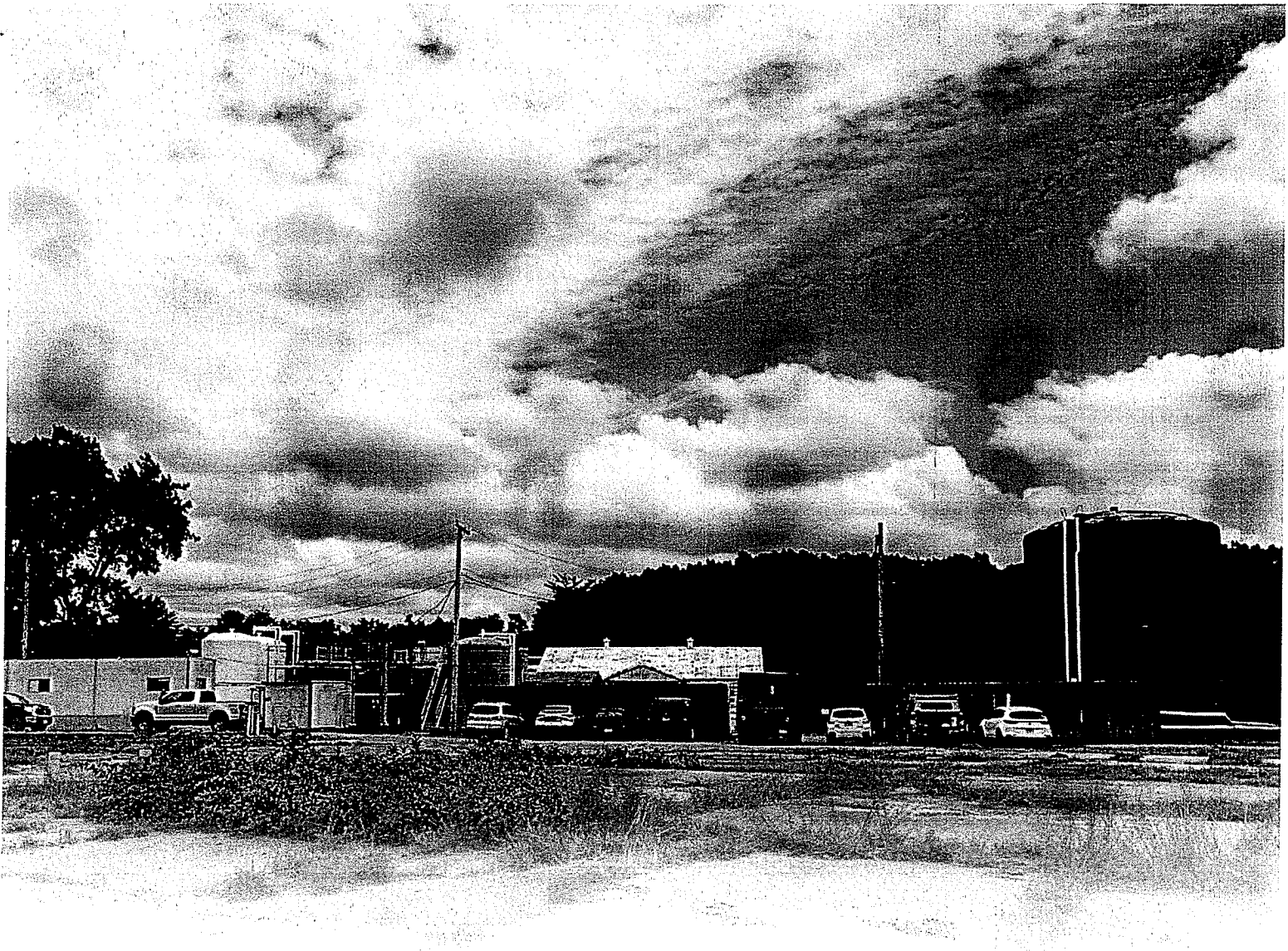
USEPA Region 1 - Office of Public Affairs

5 Post Office Square, Suite 100

Boston, MA 02109

Pronouns: She, her, hers





# OLIN CHEMICAL SUPERFUND SITE COMMUNITY INVOLVEMENT PLAN



**November 2022**  
**(DRAFT)**



SEMS Doc ID 100022524



# WELCOME

---

Dear Reader,

This Community Involvement Plan (CIP) is a “living” document. This means the CIP can be updated or revised as:

- Cleanup progresses
- Site conditions change
- EPA receives significant input from the community or other stakeholders on cleanup work

For more information about the Olin Chemical Superfund Site, visit the EPA site webpage at [www.epa.gov/superfund/olin](http://www.epa.gov/superfund/olin). You may access site documents online at the Wilmington Memorial Library or from a computer or mobile device. You may also access the EPA site webpage using the QR code below. In order to use the QR code, access your smart phone’s camera and center the code within the screen until you see a notification pop up on your screen. Click on the notification to be taken to the EPA site webpage directly.

**Wilmington Memorial Library**

175 Middlesex Avenue  
Wilmington, MA 01887  
(978) 658-2967

\* Please call to confirm hours/availability.

The CIP is also posted on EPA’s website. EPA invites the community to provide input and feedback on its work at the site.



Use this QR code to access the EPA site webpage.

## EPA Wants to Hear from You!

EPA is looking for community feedback about:

- The information in this CIP
- Your site-related communication needs
- Concerns and expectations about the cleanup
- How you prefer to receive information from EPA

To submit comments, please reach out to the contacts below:

**U.S. Environmental Protection Agency (EPA)**

**Region 1**

5 Post Office Square – Suite 100  
Boston, MA 02109

**Charlotte Gray**

**EPA Community Involvement Coordinator**

(617) 918-1243

[gray.charlotte@epa.gov](mailto:gray.charlotte@epa.gov)

**Chris Kelly**

**EPA Remedial Project Manager**

(617) 918-1382

[kelly.christopher@epa.gov](mailto:kelly.christopher@epa.gov)

**Melanie Morash**

**EPA Remedial Project Manager**

(617) 918-1292

[morash.melanie@epa.gov](mailto:morash.melanie@epa.gov)

**Massachusetts Department of**

**Environmental Protection (MassDEP)**

1 Winter Street

Boston, MA 02108

**Garry Waldeck**

**Bureau of Waste Site Cleanup**

**Environmental Engineer**

(617) 348-0417

[garry.waldeck@mass.gov](mailto:garry.waldeck@mass.gov)

# TABLE OF CONTENTS

---

<b>INTRODUCTION</b>	<ul style="list-style-type: none"><li>• Community Involvement at the Olin Chemical Superfund Site</li></ul>	<b>3</b>
<b>ABOUT THE SITE</b>	<ul style="list-style-type: none"><li>• Site Overview</li></ul>	<b>4</b>
<b>THE COMMUNITY</b>	<ul style="list-style-type: none"><li>• About the Community</li><li>• Past Community Involvement Activities</li><li>• Environmental Justice</li><li>• Overview of the CIP Process</li><li>• Community Issues and Concerns</li></ul>	<b>8</b>
<b>COMMUNITY INVOLVEMENT ACTION PLAN</b>	<ul style="list-style-type: none"><li>• Introduction to the Action Plan</li><li>• Ongoing Communication</li><li>• Community Involvement Tools and Activities</li></ul>	<b>13</b>
<b>APPENDICES</b>	<ul style="list-style-type: none"><li>• The Superfund Remedial Process</li><li>• Key Contacts</li><li>• Local Media Outlets</li><li>• Potential Meeting Locations</li><li>• Additional Resources</li><li>• Acronyms and Abbreviations</li></ul>	<b>16</b>

---

# INTRODUCTION

---

The goal of this Community Involvement Plan (CIP) is to encourage and facilitate community engagement during the investigation and cleanup of contamination associated with the Olin Chemical Superfund Site (Site). The CIP describes how EPA will involve the community and address local needs during the Superfund process. EPA and the community will work together using the tools described in this plan. Active public involvement is crucial to the success of any project. EPA's community involvement activities at the Site are designed to inform the public of all investigation and cleanup activities and include the community in the decision-making process.

EPA defines the "community" as those people and entities who have an interest in or are affected by the Site. EPA also recognizes that other stakeholders, including local, state, and federal agencies, may have an interest in the Site. This CIP is based on a series of community interviews conducted from December 2021 through April 2022 with the affected community and stakeholders in accordance with EPA's Superfund community involvement and cleanup guidance. The CIP is a "living document," meaning that it can be updated or revised over the course of the site investigation and cleanup to reflect long-term changes in the community.

## **Community Involvement at the Olin Chemical Superfund Site**

Active and participatory community involvement is an important part of the cleanup process. It is also required under the Comprehensive Environmental Response, Compensation, and Liability Act (CERCLA), also known as "Superfund." This CIP follows community involvement requirements in the Superfund Amendments and Reauthorization Act of 1986 (SARA) §117 and the National Oil and Hazardous Substances Pollution Contingency Plan (NCP) 40 C.F.R. §300.430. EPA's Community Involvement Program is designed to facilitate the participation of community members throughout the Superfund cleanup process, including the investigation phase and the remedy selection phase. EPA works closely with state and local agencies to provide community involvement throughout the Superfund process.

# ABOUT THE SITE

## Site Overview

The Olin Chemical Superfund Site includes a 53-acre property located at 51 Eames Street in Wilmington, Massachusetts, and surrounding (“off-property”) areas affected by contaminated releases from past manufacturing and waste disposal activities that took place at the property. These releases resulted in soil, sediment, surface water, and groundwater contamination.

To manage the cleanup, EPA divided the Site into three Operable Units (OUs). Please see the site timeline on page 7 for more information about Site activities.

- OU1 includes soil, surface water, sediment, and potential vapor intrusion on the Olin property (former facility area, established conservation area, on-property stream system, Calcium Sulfate Landfill, and Slurry Wall Containment Area).
- OU2 includes off-property surface water and sediment areas (East Stream, a small portion of South Stream, Off-Property West Stream, portions of Maple Meadow Brook Wetlands, Landfill Brook, and North Pond).
- OU3 includes all on- and off-property groundwater areas and soils located within the water table (Maple Meadow Brook Aquifer, groundwater beneath the Olin property, and groundwater located south and east of the Olin property). OU3 includes testing of private drinking water and irrigation wells located within the Groundwater Study Area (GSA).

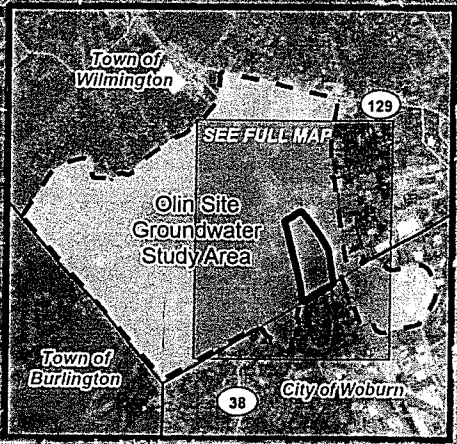
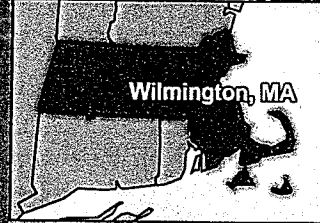
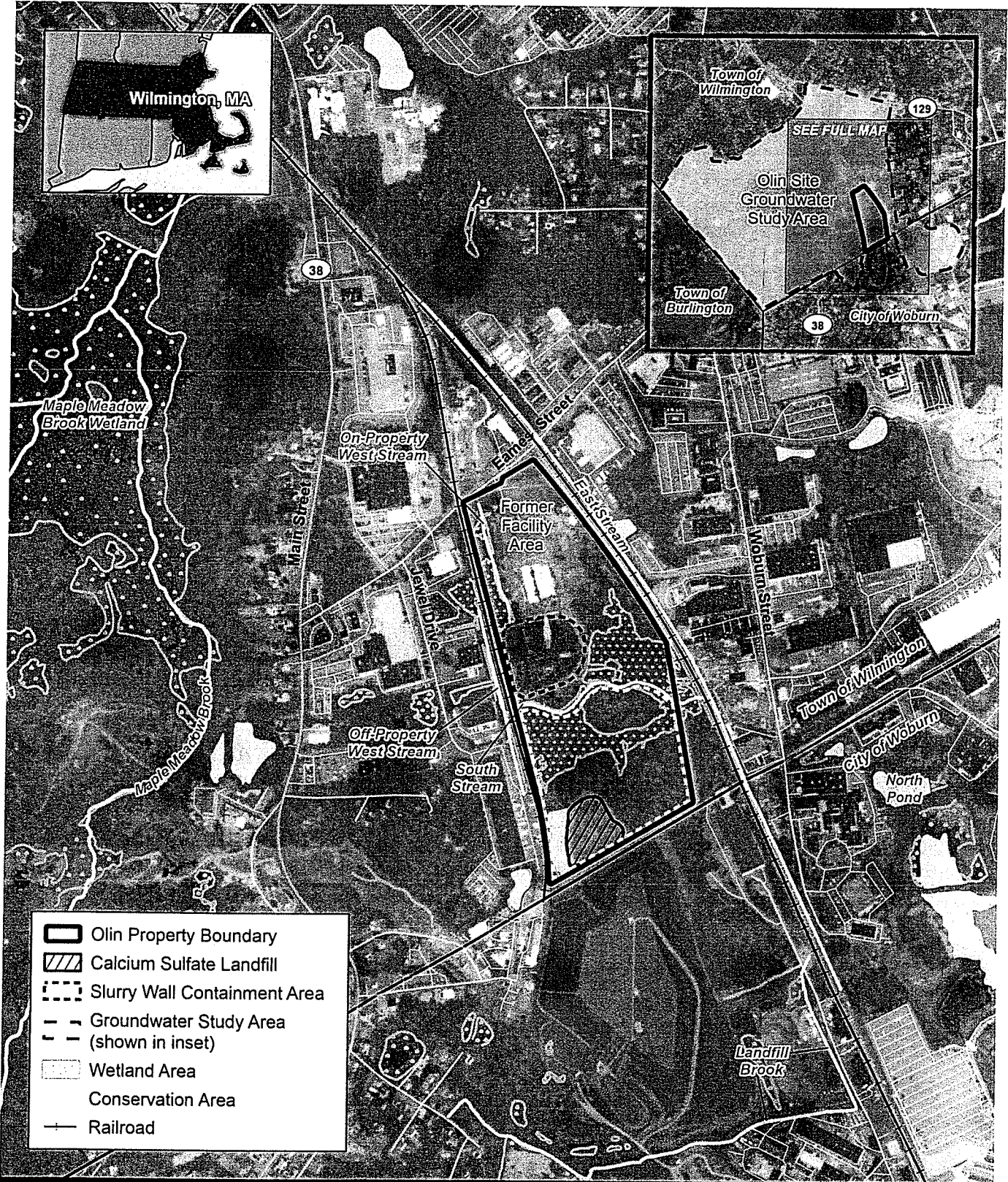
A developer has expressed interest in developing a warehouse facility on the Olin property that may utilize the rail lines adjacent to the property. While EPA does not dictate the terms of redevelopment, if redevelopment occurs, EPA will ensure that the project does not adversely impact the selected cleanup for the Site and EPA’s efforts to collect more data to select and implement a final cleanup plan in the future to address groundwater contamination. EPA will review any proposed project for consistency and compatibility with the Site’s remedy and site conditions.

Throughout the cleanup process, EPA is committed to involving the public and keeping the community informed about cleanup activities and how these activities may affect them. This CIP has been developed to facilitate two-way dialogue between EPA and the community, and to identify tools that encourage participation throughout the investigation and cleanup. This plan is based on input from local government representatives, residents, community organizations, and other stakeholders. For more information about the Site, visit [www.epa.gov/superfund/olin](http://www.epa.gov/superfund/olin).

### Other Resources

- Town of Wilmington: [www.wilmingtonma.gov/health-department/pages/olin-chemical](http://www.wilmingtonma.gov/health-department/pages/olin-chemical)
- MassDEP: [www.mass.gov/orgs/massachusetts-department-of-environmental-protection](http://www.mass.gov/orgs/massachusetts-department-of-environmental-protection)
- Massachusetts Department of Public Health: [www.mass.gov/orgs/department-of-public-health](http://www.mass.gov/orgs/department-of-public-health)

*Please see page 20 for additional webpages and resources.*



- Olin Property Boundary
- Calcium Sulfate Landfill
- Slurry Wall Containment Area
- Groundwater Study Area (shown in inset)
- Wetland Area
- Conservation Area
- Railroad



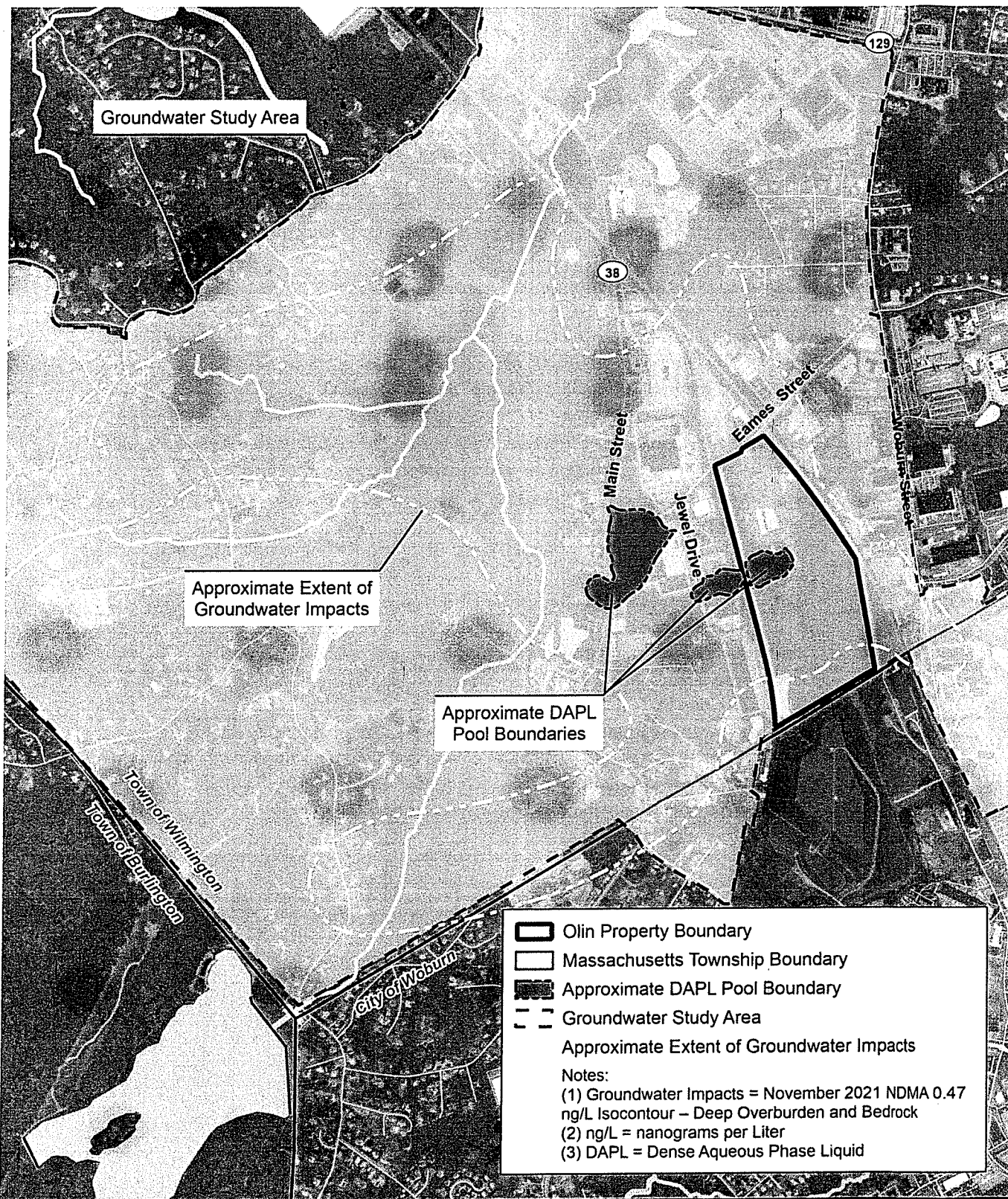
**Olin Chemical Superfund Site**  
**Major Site Features**  
 Town of Wilmington, Middlesex County, Massachusetts



*Disclaimer: This map and any boundary lines within the map are approximate and subject to change. The map is not a survey. The map is for informational purposes only regarding the EPA's response actions at the Site. Sources: Esri Community Maps Contributors, MassGIS, © OpenStreetMap, Microsoft, Esri, HERE, Garmin, SafeGraph, GeoTechnologies, Inc, METI/NASA, USGS, EPA, NPS, US Census Bureau, USDA, Earthstar Geographics, Esri, HERE, Garmin, SafeGraph, GeoTechnologies, Inc, METI/NASA, USGS, EPA, NPS, USDA, Map data © OpenStreetMap contributors, Microsoft, Facebook, Inc and its affiliates, Esri Community Maps contributors, Map layer by Esri, Maxar and the 2021 ROD.*







Olin Property Boundary  
 Massachusetts Township Boundary  
 Approximate DAPL Pool Boundary  
 Groundwater Study Area  
 Approximate Extent of Groundwater Impacts

Notes:  
 (1) Groundwater Impacts = November 2021 NDMA 0.47 ng/L Isocontour – Deep Overburden and Bedrock  
 (2) ng/L = nanograms per Liter  
 (3) DAPL = Dense Aqueous Phase Liquid

**N**  
**Olin Chemical Superfund Site**  
**Extent of Groundwater Impacts**  
 Town of Wilmington, Middlesex County, Massachusetts

*Disclaimer: This map and any boundary lines within the map are approximate and subject to change. The map is not a survey. The map is for informational purposes only regarding the EPA's response actions at the Site. Sources: Esri Community Maps Contributors, Esri, HERE, Garmin, SafeGraph, GeoTechnologies, Inc, METI/NASA, USGS, EPA, NPS, US Census Bureau, USDA, Map data © OpenStreetMap contributors, Microsoft, Facebook, Inc, and its affiliates, Esri Community Maps contributors, Map layer by Esri, Maxar and the 2021 ROD.*

Last Modified: 11/4/2022

## Site Timeline

<b>1953 - 1986</b>	Operation of a chemical manufacturing facility at the 51 Eames Street property under various owners.
<b>1986 - 2006</b>	Olin Corporation (a Potentially Responsible Party or PRP) conducted work to address wastes on the property under MassDEP oversight.
<b>2006</b>	EPA added the Site to the Superfund program's National Priorities List.
<b>2008</b>	EPA awarded a Technical Assistance Grant (TAG) to the Wilmington Environmental Restoration Committee (WERC).
<b>2008 - 2009</b>	EPA required that Olin Corporation sample 11 private wells near the Olin property for NDMA (n-nitrosodimethylamine, listed as a priority pollutant by EPA). A water line extension was constructed for homes near the Olin property to connect them to the public water supply.
<b>2008 - 2012</b>	The Jewel Drive dense aqueous phase liquid (DAPL) pilot extraction system was designed and built. The system removes DAPL pooled on top of bedrock.
<b>2008 - present</b>	Quarterly testing conducted for private wells in the OU3 Groundwater Study Area (GSA).
<b>2010</b>	Olin Corporation began providing bottled water to two households on Cook Avenue.
<b>2012 - 2022</b>	Operation of the Jewel Drive DAPL extraction system – more than one million gallons DAPL has been removed from the aquifer.
<b>July 2015</b>	A Remedial Investigation Report for OU1 and OU2 (soil, surface water, and sediments) was finalized.
<b>June 2019</b>	A draft Remedial Investigation Report for OU3 was completed; aquifer investigations are ongoing.
<b>August 2020</b>	EPA issued a Proposed Plan for the Site. EPA hosted a virtual public information meeting on August 12, 2020. A virtual formal public hearing was held on September 22, 2020.
<b>March 2021</b>	EPA approved a decision on a final cleanup remedy for OU1 and OU2 and an interim remedy for OU3, as described in the Site's Record of Decision.
<b>August 2021</b>	Private well owners on Cook Avenue were connected to the public water supply.
<b>September 2021</b>	A 10-year moratorium on the installation of new wells was approved for the GSA by the Town of Wilmington's Board of Health. The GSA includes 619 properties in Wilmington.
<b>2021 - 2022</b>	EPA conducted community interviews and developed a CIP.

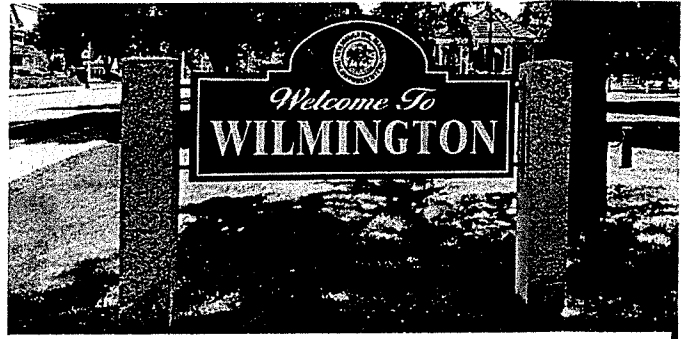


View looking north towards the former manufacturing areas of the Olin Chemical Superfund Site. Visible in the foreground is the temporary cap on the Slurry Wall Containment Area.

# THE COMMUNITY

## About the Community

The community near the Site is located primarily in Wilmington, but includes parts of Woburn as well. Several other EPA-regulated facilities are located in the area. There are seven Superfund sites within a 10-mile radius of the Site. Given this setting, the community faces many environmental challenges. According to the U.S. Census' 2015-2019 American Community Survey 5-Year Estimates, 184,951 people in 69,480 households live within a 5-mile radius of the Site.



The community near the Site is located primarily in Wilmington.


Located about 16 miles from Boston, the Town of Wilmington was founded in 1730. Wilmington began as a small, rural community until the late nineteenth century, when the Middlesex Canal and railroads connecting Boston to the surrounding countryside spurred the town's growth. In the late 1950s, the construction of Interstate 93 confirmed Wilmington's status as a well-located "bedroom" community for people commuting to Boston. Today, approximately 23,000 people live in Wilmington. The town is an active and vibrant place, with engaged residents and a strong sense of community.

The City of Woburn, just south of Wilmington, also has a long history of European settlement. Woburn's founding in 1640 makes it one of the oldest communities in New England. Woburn has a notable industrial past, with leather tanning, rubber, and shoemaking as key industries in the 1800s. Today, over 40,000 people live in Woburn. The community includes residential neighborhoods, bustling industrial parks, and beautiful natural areas.

## Demographic Data within a 5-mile Radius of the Site

U.S. Census Bureau, American Community Survey 2015-2019

One Race	98%
White	85%
Black or African American	3.4%
American Indian and Alaska Native	0.0%
Asian	8.0%
Some Other Race	1.4%
Two or More Races	2.2%
Hispanic or Latino (of Any Race)	3.1%
Population 65 Years and Older	18%
Population with Less Than a High School Degree	4.5%
Households with Income Base Less Than \$50,000	21%
Renter Occupied Units	25%
Population Speaking a Non-English Language at Home	16%



**Technical Assistance Services  
for Communities  
Olin Chemical Superfund Site**

---

**Overview of the Olin Chemical Superfund Site**

This fact sheet provides a general overview of the Olin Chemical Superfund site in Wilmington, Massachusetts, and includes the following:

- Site background
- Areas of environmental concern
- Conceptual Site Model (CSM)
- Site status (as of October 2019)
- Next steps

This fact sheet is funded by the U.S. Environmental Protection Agency's (EPA's) Technical Assistance Services for Communities (TASC) program.

**Site Background**

The 51-acre Olin Chemical Superfund site (previously located at 51 Essex Street in Wilmington, Massachusetts (Figure 1). From 1955 to 1996, Olin Chemical Corporation (Olin) made specialty chemicals for the rubber and plastics industry at the site (Figure 2). Wastes disposed of on the property caused groundwater contamination both on and off the Olin property. The site includes about 50 acres of Olin property and about 3 acres of adjacent areas off of the Olin property. The gold line in Figure 1 shows the Olin property boundaries.

From 1996 to 2006, Olin's contractually responsible party (PRP) conducted work under the oversight of the Massachusetts Department of Environmental Protection (MassDEP) to address wastes at the site. In 2008, the Town of Wilmington closed all lines of its municipal supply wells located in the Maple Meadow Brook Aquifer (Figure 3) due to the detection of a chemical called No.




Figure 1. Site Overview Map of Olin Chemical Superfund Site, Wilmington, Massachusetts, 2019.




Figure 2. Aerial Photo of the Site from 1977. Photo courtesy of EPA.

U.S. ENVIRONMENTAL PROTECTION AGENCY  
Technical Assistance Services for Communities (TASC)

Page from a past TASC fact sheet.



## Past Community Involvement Activities

EPA is committed to engaging the community throughout the Superfund investigation and cleanup process. After its addition to the Superfund program's National Priorities List, EPA hosted its first public meeting for the Site in 2006. Since then, EPA has hosted public meetings and shared written site updates periodically. The Wilmington Environmental Restoration Committee (WERC) was a recipient of an EPA Technical Assistance Grant (TAG). The community has also received technical advising support and technical assistance from EPA's Technical Assistance Services for Communities (TASC) program.

## Environmental Justice

Environmental Justice is the fair treatment and meaningful involvement of all people regardless of race, color, national origin or income, with respect to the development, implementation, and enforcement of environmental laws, regulations and policies.

EPA Region 1 programs collaborate closely to make sure that underserved, low income, and tribal communities facing disproportionate environmental risks have opportunities for meaningful participation in environmental decision making. Region 1 also coordinates closely with EPA Headquarters and states to support initiatives that provide all people living near Superfund sites with technical assistance, training opportunities, and other services. EPA has a variety of environmental justice resources available at [www.epa.gov/environmentaljustice](http://www.epa.gov/environmentaljustice). These resources include:

- The [Environmental Justice Collaborative Problem-Solving Cooperative Agreement Program](#) provides funding for eligible applicants for projects that address local environmental and public health issues in an affected community. The program assists recipients in building collaborative partnerships to help them understand and address environmental and public health concerns in their communities.
- EPA's [Environmental Justice Small Grants Program](#) supports and empowers communities working on solutions to local environmental and public health issues. The program helps communities understand and address exposure to multiple environmental harms and risks.

## EJScreen

EJScreen is an environmental justice mapping and screening tool. It uses environmental indicators to show potential exposures and demographic factors to show potential susceptibility. An EJScreen analysis for a 1-mile radius surrounding the Site in 2022 found none of the 12 environmental justice indicators and none of the socioeconomic indicators at the 80th percentile or above, compared to the rest of the United States or the Commonwealth of Massachusetts.

Selected Variables	State Percentile	EPA Region Percentile	USA Percentile
<b>Environmental Justice Indexes</b>			
EJ Index for Particulate Matter 2.5	25	25	21
EJ Index for Ozone	28	28	18
EJ Index for 2017 Diesel Particulate Matter*	17	10	12
EJ Index for 2017 Air Toxics Cancer Risk*	15	13	13
EJ Index for 2017 Air Toxics Respiratory HI*	23	20	18
EJ Index for Traffic Proximity	10	5	1
EJ Index for Lead Paint	36	31	9
EJ Index for Superfund Proximity	1	1	0
EJ Index for RMP Facility Proximity	13	11	8
EJ Index for Hazardous Waste Proximity	5	3	1
EJ Index for Underground Storage Tanks	4	4	3
EJ Index for Wastewater Discharge	12	14	18

## **EJScreen Quick Facts**

To summarize how environmental indicators and demographics come together in the same location, EJScreen uses EJ Indexes. EJScreen has 12 EJ Indexes that reflect the 12 environmental indicators below. In the EJ Indexes, environmental indicators are combined with information about the low-income and minority population in a Census block group. EJScreen presents results in terms of percentiles, allowing community comparisons with the rest of the state, an EPA Region or the nation.

- National Scale Air Toxics Assessment Air Toxics Cancer Risk
- National Scale Air Toxics Assessment Respiratory Hazard Index
- National Scale Air Toxics Assessment Diesel Particulate Matter
- Particulate Matter (PM2.5)
- Ozone
- Lead Paint Indicator
- Traffic Proximity and Volume
- Proximity to Risk Management Plan Sites
- Proximity to Hazardous Waste Facilities
- Proximity to National Priorities List Sites
- Underground Storage Tanks Indicator
- Wastewater Discharge Indicator

## **Overview of the CIP Process**

From December 2021 through April 2022, EPA conducted virtual CIP interviews with stakeholders in the community, including officials from the Town of Wilmington, members of WERC, local residents, and representatives from a Potentially Responsible Party (PRP). EPA conducted some interviews individually, and some through focus groups. EPA advertised the opportunity to participate in a focus group interview through direct contacts with community members, coordination with local officials to promote the information about the interviews, postcard mailings, emails, website updates, a post on the *Wilmington Apple*, and an ad in the *Wilmington Town Crier*. EPA shared a draft of the CIP with the community for review and comment in fall 2022. The following sections summarize the feedback provided to EPA during the community interviews.

## **Community Issues and Concerns**

During the interviews, community members and stakeholders shared their concerns and perspectives about site cleanup, health risks, environmental impacts, community involvement, and site reuse. All interviewees had a basic familiarity with the Site and site history, but they wanted more information from EPA about the Site and site-related issues. Interviewees and their responses were diverse. Comments from the interviews fit into six main categories: Human Health, Cleanup and Timeline, Redevelopment, Community Involvement, Method of Communication, and Accountability and Trust. The sections below summarize the feedback EPA received for each of these categories.

## HUMAN HEALTH



Interviewees shared concerns about health impacts of site contamination. Most interviewees' health concerns focused on past exposure to contamination, as detailed in the state's epidemiological study that was released in 2021. Some people expressed concerns about ongoing health risks posed by the Site.

Interviewees said that EPA could do more to inform the public about long-term risks associated with site contamination, including using methods discussed under the "Community Involvement" and "Method of Communication" headings on the next page.

## CLEANUP AND TIMELINE



Interviewees expressed concerns about the pace of site investigations and cleanup. A number of interviewees have been involved and following the Site for decades. They are frustrated about the slow pace of investigation and cleanup. Some interviewees shared a fear that the PRPs will not fully fund or complete the cleanup, given the long-term nature of the effort. Many interviewees are concerned that the Site, and especially the aquifer, will never be fully restored.

Some interviewees worried that more contamination will be discovered, and that there is still contamination in the site area. They also shared concerns that future site development might interfere with or slow down the cleanup.

## REDEVELOPMENT



Interviewees shared concerns about the future development of the Site and the potential impact of redevelopment on the surrounding community. Participants worried that development could contribute to more contamination or negatively impact the community in general.

Interviewees also expressed interest in redevelopment that would benefit the community. They noted mixed-use, commercial use, wetlands restoration, and open space for recreation as potential reuses for the Site. One person said that a reuse that brings in tax revenue would be beneficial. Some people noted that a warehouse could be a good reuse option for the Site, although it may increase truck traffic. Several interviewees said that they did not want to see a transfer station on the property.

## COMMUNITY INVOLVEMENT



Interviewees were split on the effectiveness of virtual meetings versus in-person meetings. Where feasible, the majority of people suggested an in-person open house format for meetings, where attendees can review printed materials and infographics and ask EPA staff questions in an informal setting.

Interviewees also emphasized that information needs to be presented in plain language, in a way that is easy to understand. They also said that some past interactions with government agencies at the Site had not been well received and the community members perceived government officials as dismissive of their concerns.

Interviewees said that EPA could do more to inform the public about progress related to site investigations and cleanup.

## METHOD OF COMMUNICATION



Interviewees had many recommendations for outreach and communication. Most people expressed a desire for more frequent updates from EPA about the status of the cleanup. Interviewees suggested using local newspapers (the *Wilmington Apple* and the *Wilmington Town Crier*) to share fact sheets and updates. They also suggested sharing information through the local public television station, Wilmington Community Television (WCTV), to reach residents. Other suggested methods of outreach included EPA's site webpage updates, in-person meetings, social media, direct mailings, and presentations for the Wilmington Board of Selectmen.

## ACCOUNTABILITY AND TRUST



Interviewees shared concerns about whether site cleanup would be completed. They said that community concerns about the long cleanup timeline have contributed to community distrust. One interviewee noted that the extended investigation and cleanup timeline makes it challenging to hold public interest in the Site. People said that the community's efforts have kept the cleanup moving forward, and that the community has not always had a good relationship with site agencies.

Some interviewees said they did not know who is accountable or responsible for the Site, as many agencies and staff members have been involved over the years. They also noted that some community members do not feel that the Town of Wilmington has been responsive to site contamination and community concerns. Some people feel that there have not been appropriate repercussions for the parties responsible for the contamination of the water supply.

# THE COMMUNITY INVOLVEMENT ACTION PLAN

## Introduction to the Action Plan

Using information gathered during community interviews, EPA developed this Action Plan to address the community's needs, concerns, questions, and expectations, as well as the community's communication styles and preferences.

## Ongoing Communication

EPA will continue to work with MassDEP, the Town of Wilmington, WERC and other local organizations, and community members to make sure site information and important site updates are shared directly with the public.

To sign up for the site email or mailing list, please contact EPA's Community Involvement Coordinator Charlotte Gray, at [gray.charlotte@epa.gov](mailto:gray.charlotte@epa.gov) or by calling 617-918-1243.

## Community Involvement Tools and Activities

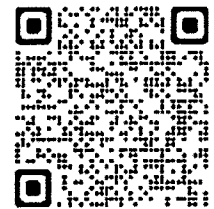
EPA has identified and developed a variety of tools and activities to better engage with and involve the community.

### Webpage

EPA will continue to maintain a webpage for the Site. For past, current, and future site updates, please visit: [www.epa.gov/superfund/olin](http://www.epa.gov/superfund/olin).

The webpage will:

- Provide an overview and history of the Site and EPA's involvement.
- Host regularly updated information about the Superfund cleanup process. New information will be featured under Stay Updated, Get Involved (Announcements and Key Topics section).
- Share site-related reports and documents with the public as they become available. A link to the document section is located under the Site Documents and Data section of the site webpage.



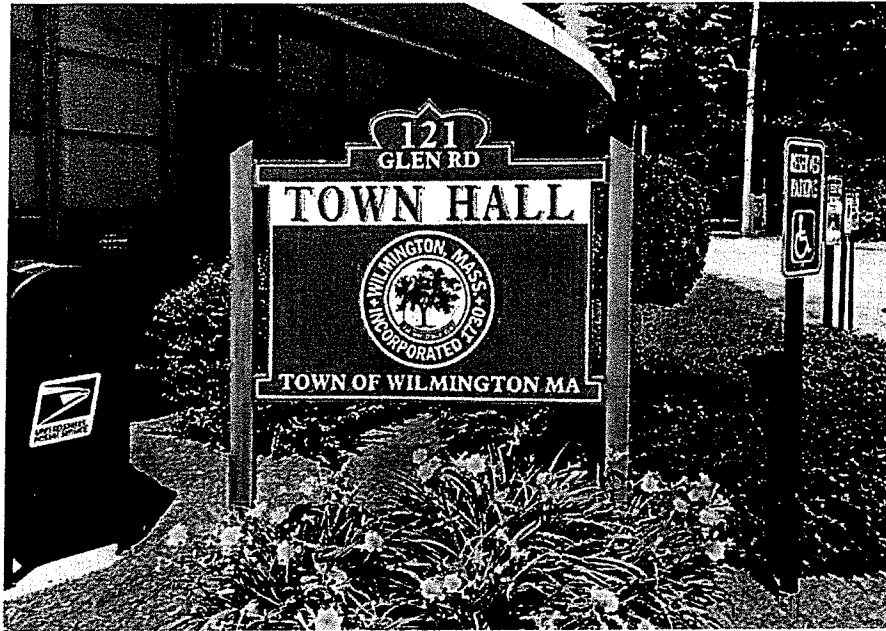
Use this QR code to access the EPA site webpage.

### Periodic Updates, Fact Sheets and Educational Materials

To help address community concerns about the Site, EPA staff will provide site updates and site information in plain language and in print and electronic formats. EPA will collect, prepare, and share documents to help people better understand site conditions and the cleanup. Updates will be shared regularly. Updates, fact sheets, and materials may be shared by email, targeted physical mailings, and site webpage postings. Informational materials will include contact information to enable direct access to EPA staff. When appropriate, EPA will provide key site updates in a format that can be easily shared by community members and stakeholders via social media.

### EPA-hosted Events

EPA staff will host meetings, informal public information sessions, and open houses to share information with the community. In-person meetings will be held when possible. When necessary, EPA staff may host meetings virtually, in coordination with the community. To ensure accessibility, EPA staff will provide options for people to participate by phone if they are not able to join a web-based meeting and closed captioning will be provided. Wherever possible, EPA staff will share meeting materials on the Site's webpage in advance of meetings. If special accommodations are needed for a meeting, please let Charlotte Gray, EPA's Community Involvement Coordinator, know at least one week prior to the meeting.



EPA will continue to work with the Town of Wilmington and local organizations to share site information directly with the public.

### **Community Meetings**

Based on availability, EPA staff will attend meetings held by community groups, local government, and other organizations upon request to share information about the Site and to address community questions, concerns, ideas, and comments. To identify appropriate opportunities and venues to deliver information about the Site, EPA will work with the community to coordinate the meetings. EPA may attend these meetings in person or virtually, in coordination with the community and as appropriate.

### **Briefings with Local Officials**

EPA staff have held regular meetings with local officials to provide briefings about the Site and respond to questions and concerns. Upon request, EPA staff may attend additional meetings to provide updates about site work and investigation and cleanup progress.

### **Mailing List**

EPA will continue to maintain and update the site mailing list. The list has been developed based on meeting sign-in sheets, community interviews, and email and telephone inquiries. If you would like to be added to the mailing list, please send a request by email, telephone, or mail to Charlotte Gray, EPA's Community Involvement Coordinator. Please see page 17 for contact information for EPA's project staff.

### **Translations**

EPA may provide written information about the Site in English and other languages as needed. Language interpretation needs will be provided as requested and coordinated by EPA's Community Involvement Coordinator. Based on the feedback received during the stakeholder interviews, EPA will provide American Sign Language translation services for community meetings moving forward.

## Formal Public Comment Periods

During the Superfund process, EPA announces and opens public comment periods and encourages people to share their questions, concerns, and feedback. EPA accepts formal comments on several types of documents, including Proposed Plans, as well as when EPA proposes a site for listing on or deletion from the Superfund program's National Priorities List. EPA considers all public comments in the Superfund decision-making process. The community will be notified of public comment periods by public notice in local papers, EPA website updates, email and mailing notifications sent to the community list. Additionally, EPA will work with local officials, WERC and community groups to help spread the word.

### Public Comment Tips

Commenting is an important way to make your voice heard. Public comments can strengthen an environmental decision by providing the authoring agency with facts or perspectives lacking in the original draft. Commenting helps EPA create accurate and comprehensive documents to support appropriate and informed decision-making.

- Prepare for commenting by familiarizing yourself with the scope of the issue and relevant laws.
- Identify your key issues and concerns.
- Identify allies who can help with the document review and understanding of the materials, and coordinate your comments with them to strengthen your message.
- Be specific with your comments, including what you think could improve the document, what you think is missing from the document, what you like about the document, and what parts you want to remain in the document.



### Information Repository

EPA keeps site project information and reference materials for the public to read on the Site's webpage at [www.epa.gov/superfund/olin](http://www.epa.gov/superfund/olin). You may access site documents online at Wilmington Memorial Library or from a computer or mobile device. There are no physical documents at the library - all site materials are available online. Requests for hard copies of documents can be directed to the site's Community Involvement Coordinator. You may also access the EPA site webpage using the QR code below.

#### Wilmington Memorial Library

175 Middlesex Avenue  
Wilmington, MA 01887  
(978) 658-2967

\* Please call to confirm hours/availability.



Use this QR code to access  
the EPA site webpage.

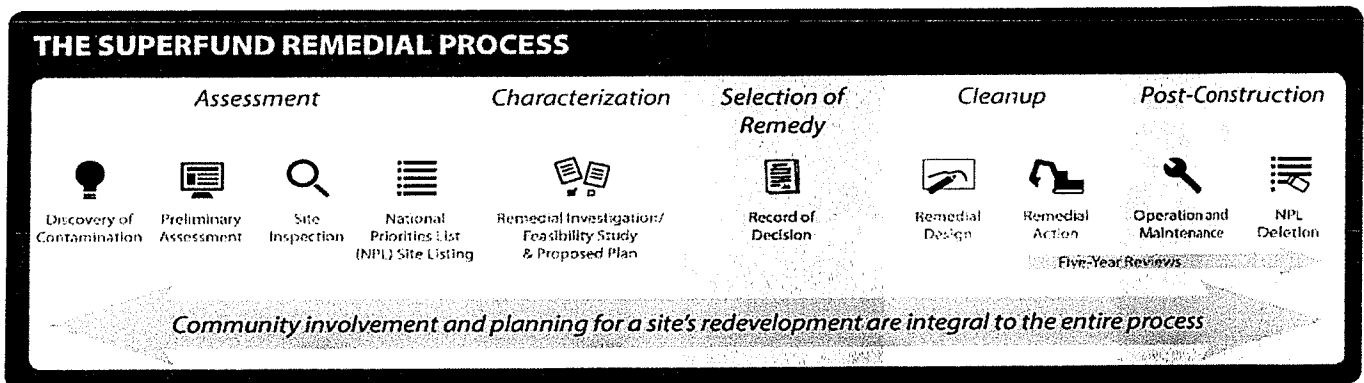


Site documents may be accessed online at the Wilmington Memorial Library or from a computer or mobile device.

# APPENDICES

## The Superfund Remedial Process

After Superfund sites are identified, EPA uses two basic types of responses – removal actions and remedial actions – to manage them. Removal actions handle emergency oil spills, chemical releases, and short-term responses. These actions eliminate immediate risks and ensure public safety. Remedial actions handle complex sites needing long-term responses. Remedial actions involve complex and highly contaminated sites that often require years to study the problem, develop a permanent solution, and clean up the hazardous waste. These are the sites that most people think of when they hear about the Superfund program. The section below describes the general steps in EPA’s Superfund remedial process.



### Assessment

EPA determines if a site poses a threat to people and the environment and whether hazards need to be addressed immediately or if more site information will be collected. EPA uses the information collected during the assessment phase of the Superfund process to score sites according to the risk they may pose to human health and the environment. If a site has a high enough score on the Hazard Ranking System and meets all other criteria, EPA may propose it for listing on the Superfund program’s National Priorities List.

### Characterization

Once a site is on the National Priorities List, further investigation into the problems at the site and an evaluation of the best way to address them is required. This work is called the Remedial Investigation and Feasibility Study. After development of cleanup alternatives, EPA recommends the option it considers best for the site and offers it to the community for evaluation and comment in a Proposed Plan.

### Selection of Remedy

The cleanup method ultimately chosen for the site, and the reasons for the selection, are set forth in the Record of Decision. The Record of Decision discusses all activities prior to the selection of a cleanup method and describes how the cleanup method will be protective of human health and the environment.

### Cleanup

The cleanup phase includes two parts, the Remedial Design and the Remedial Action phase. During the Remedial Design phase, plans for the cleanup method are carefully designed. During the Remedial Action phase, physical cleanup activities take place on site. At this Site, EPA has selected an interim cleanup for groundwater while EPA oversees further environmental studies to help select a final cleanup plan for groundwater in the future.



## Post-Construction

After EPA determines that the physical construction at a site is complete, post-construction activities ensure that the cleanup actions will protect human health and the environment over the long term. These activities may include routine maintenance at a site such as making sure signs and fences are intact or that groundwater treatment systems are running smoothly. EPA may delete a site or part of a site (sometimes called an operable unit) from the National Priorities List if all cleanup goals have been met and no further cleanup action is required to protect human health and the environment.

## Key Contacts

### EPA Region 1 Contacts

**Charlotte Gray**  
*Community Involvement Coordinator*  
5 Post Office Square – Suite 100  
Boston, MA 02109  
(617) 918-1243  
[gray.charlotte@epa.gov](mailto:gray.charlotte@epa.gov)

**Melanie Morash**  
*Remedial Project Manager*  
5 Post Office Square – Suite 100  
Boston, MA 02109  
(617) 918-1292  
[morash.melanie@epa.gov](mailto:morash.melanie@epa.gov)

**Chris Kelly**  
*Remedial Project Manager*  
5 Post Office Square – Suite 100  
Boston, MA 02109  
(617) 918-1382  
[kelly.christopher@epa.gov](mailto:kelly.christopher@epa.gov)

---

### State Contact

**Garry Waldeck**  
Massachusetts Department of  
Environmental Protection (MassDEP)  
Bureau of Waste Site Cleanup  
Environmental Engineer  
1 Winter Street  
Boston, MA 02108  
(617) 348-0417  
[garry.waldeck@mass.gov](mailto:garry.waldeck@mass.gov)

### Town of Wilmington Contacts

**Jeffrey M. Hull**  
Town Manager  
121 Glen Road  
Wilmington, MA 01887  
(978) 658-3311  
[jhull@wilmingtonma.gov](mailto:jhull@wilmingtonma.gov)  
[www.wilmingtonma.gov](http://www.wilmingtonma.gov)

**Shelly Newhouse**  
Director of Public Health  
121 Glen Road  
Wilmington, MA 01887  
(978) 658-4298  
[boh@wilmingtonma.gov](mailto:boh@wilmingtonma.gov)  
[www.wilmingtonma.gov/health-department](http://www.wilmingtonma.gov/health-department)

### Community Contact

**Martha Stevenson**  
Wilmington Environmental  
Restoration Committee (WERC)  
[wilmingtonerc@gmail.com](mailto:wilmingtonerc@gmail.com)

## Local Media Outlets

EPA will provide updates and information to local newspapers and television stations and ask them to report on site-related issues. EPA staff will respond to media inquiries in a timely fashion. Inquiries from the news media should be directed to Charlotte Gray.

EPA may publish public notices about meetings and other events in local newspapers and send notices to other local news outlets. EPA will include the following media outlets as part of outreach and information delivery efforts:



**Wilmington Apple**  
@WilmingtonApple  
[wilmingtonapple.com](http://wilmingtonapple.com)

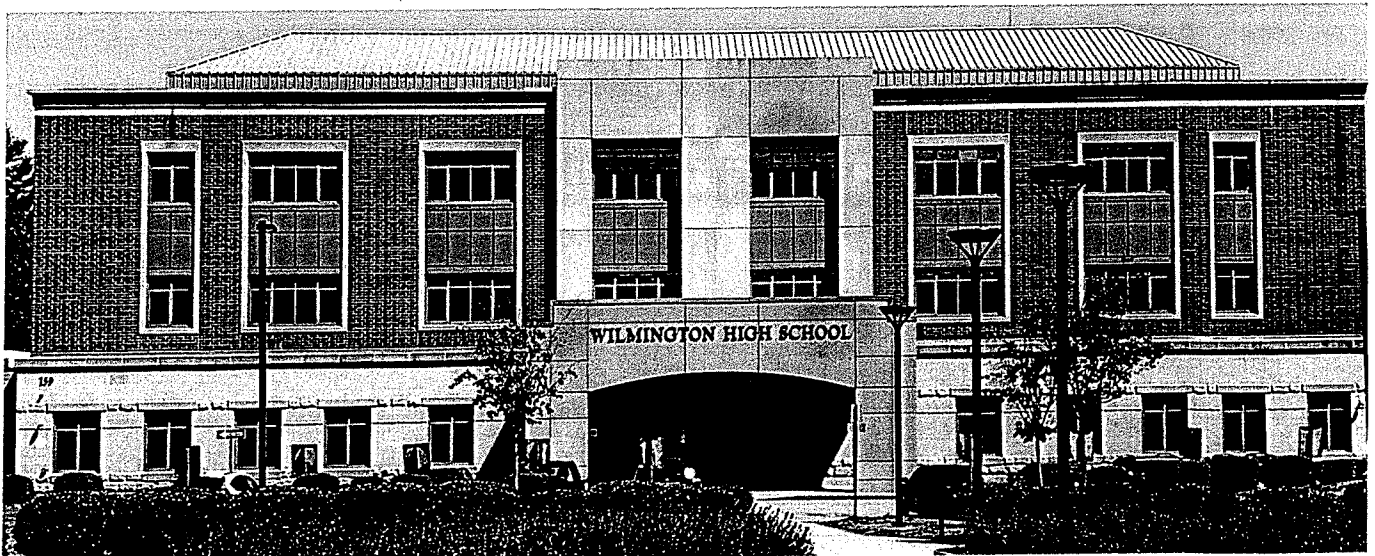
**Wilmington Town Crier**  
1 Arrow Drive  
Woburn, MA 01801  
(781) 933-3700  
[homenewshere.com/wilmington\\_town\\_crier](http://homenewshere.com/wilmington_town_crier)



**Wilmington Community Television (WCTV)**  
10 Waltham Street  
Wilmington, MA 01887  
(978) 657-4066  
[wctv.org](http://wctv.org)

## Potential Meeting Locations

EPA staff will host meetings and open houses to share information with the community. Meetings will be held in person when possible, at a central location that is Americans with Disabilities Act (ADA)-accessible, such as Wilmington Middle School or Wilmington High School. Smaller meetings can potentially be held at the Wilmington Memorial Library. Interviewees indicated an overall preference for midweek evening meetings. When necessary and in light of local health conditions and Centers for Disease Control guidance, EPA may host meetings in either a virtual or hybrid format, in coordination with the community.



EPA staff may host meetings at a central location such as Wilmington High School.

## Additional Resources

### Community Advisory Group (CAG) Formation

CAGs provide a forum for community discussion of site-related issues and are made up of representatives of diverse community perspectives. The purpose of a CAG is to provide a public forum for community members to present and discuss their needs and concerns related to the Superfund decision-making process. A CAG can assist EPA in making better decisions on how to clean up a site.

EPA can assist with CAG formation, including providing the following services:

- Informational meetings about CAGs
- Assistance in determining CAG size and membership
- Trainings for CAG members
- Administrative support, translation, and meeting facilitation services

For more information about CAGs, please visit [www.epa.gov/superfund/superfund-community-advisory-groups](http://www.epa.gov/superfund/superfund-community-advisory-groups) or contact EPA's Community Involvement Coordinator (please see page 17 for contact information).

### Community Technical Assistance Resources

EPA provides additional assistance to communities through a variety of technical assistance resources. These resources include the Technical Assistance Grant (TAG) program and the Technical Assistance Services for Communities (TASC) program. The Wilmington Environmental Restoration Committee (WERC) has been a recipient of a TAG, and the broader Olin site community has received technical advising support and technical assistance from the TASC program. For more information on these resources, please visit: [www.epa.gov/superfund/superfund-technical-assistance-communities](http://www.epa.gov/superfund/superfund-technical-assistance-communities).

WERC is a group formed in 2007 primarily to apply for and administer an EPA TAG associated with the Olin Chemical Superfund Site. WERC's membership includes "affected persons" living in both Wilmington and Woburn, including several individuals who are very familiar with previous assessments, remedial proposals, and the history of the 51 Eames Street property. Members includes a number of environmental engineers who volunteer to share their expertise and individuals with extensive organizational experience.

The group is committed to helping the community better understand the human health and environmental impacts from the Site, and to share residents' concerns with EPA and others. The group's goals include providing critical input to assessment decisions, participating in the planning of remedial actions affecting Wilmington's Maple Meadow Brook aquifer and the entire site area, and facilitating the exchange of information between all participants in the Superfund process.

Since being awarded the grant funding in 2008, WERC has engaged several environmental firms to evaluate key reports, present technical comments to EPA, and assist in relaying their content and meaning to the community at large. WERC's technical team continues to meet periodically with representatives of EPA and MassDEP, and with state and local government officials for updates on activities at the Site. WERC also participates in and helps promote public informational meetings to keep residents informed of activities at the Site.

For more information, please contact WERC via email at [WilmingtonERC@gmail.com](mailto:WilmingtonERC@gmail.com).

## Other Web Resources

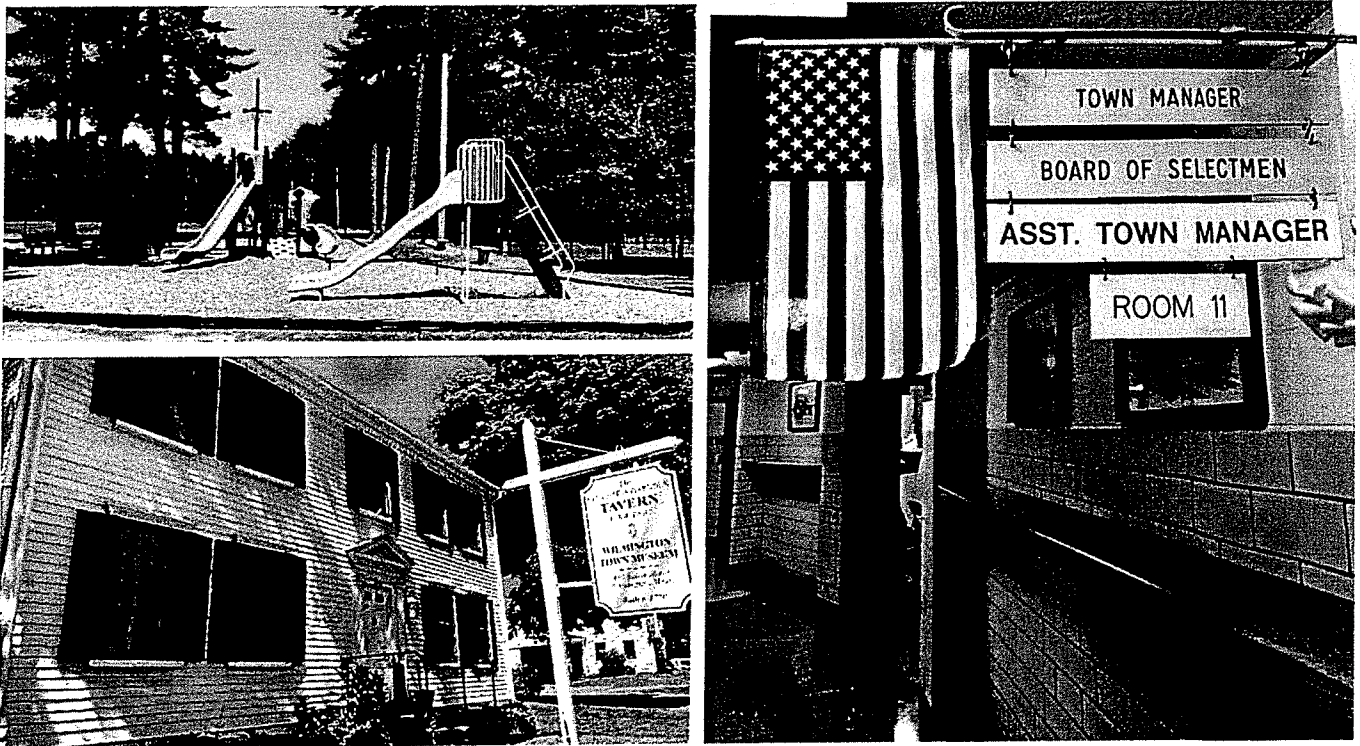
EPA also has other webpages available that provide information about the Superfund program and Region 1:

- National Superfund program: [www.epa.gov/superfund](http://www.epa.gov/superfund)
- EPA Region 1: [www.epa.gov/aboutepa/epa-region-1-new-england](http://www.epa.gov/aboutepa/epa-region-1-new-england)
- Superfund Community Involvement: [www.epa.gov/superfund/superfund-community-involvement](http://www.epa.gov/superfund/superfund-community-involvement)
- Superfund Redevelopment: <https://www.epa.gov/superfund-redevelopment>

Other organizations with webpages that provide information about the Site include:

- Massachusetts Department of Environmental Protection: [www.mass.gov/orgs/massachusetts-department-of-environmental-protection](http://www.mass.gov/orgs/massachusetts-department-of-environmental-protection)
- Massachusetts Department of Health: [www.mass.gov/orgs/department-of-public-health](http://www.mass.gov/orgs/department-of-public-health)
- Wilmington Childhood Cancer Study: An Epidemiologic Investigation of Childhood Cancer from 1990-2000: <https://www.mass.gov/doc/full-study-report/download>
- Town of Wilmington: [www.wilmingtonma.gov](http://www.wilmingtonma.gov)
  - Health Department: [www.wilmingtonma.gov/health-department](http://www.wilmingtonma.gov/health-department)

Health Department's Olin Chemical page: [www.wilmingtonma.gov/health-department/pages/olin-chemical](http://www.wilmingtonma.gov/health-department/pages/olin-chemical)



Photos from around Wilmington: Robert P. Palmer Park (top left); Wilmington Town Museum (bottom left); Town Hall (right).

## Acronyms and Abbreviations

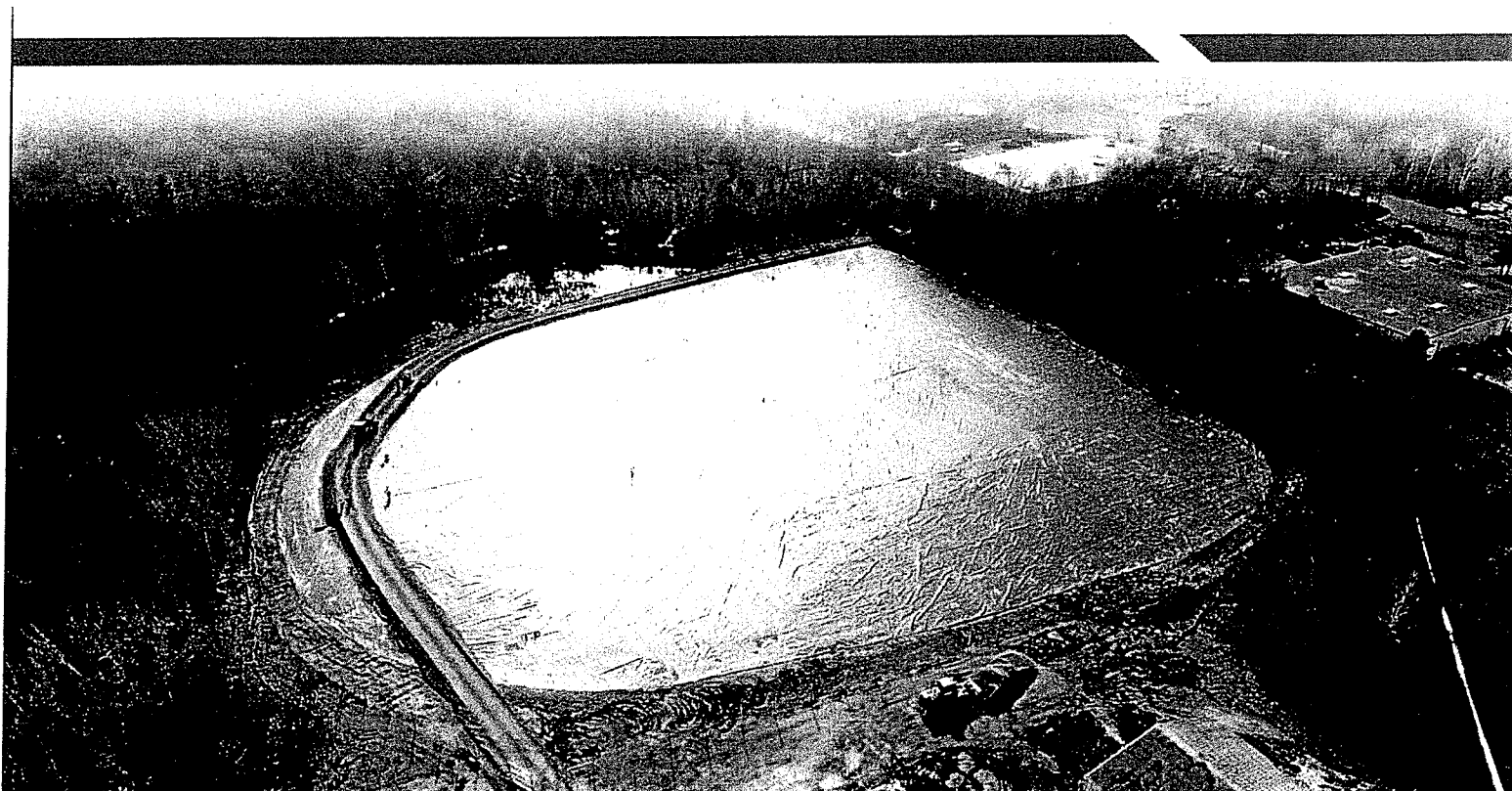
<b>ADA</b>	Americans with Disabilities Act	<b>NCP</b>	National Oil and Hazardous Substances Pollution Contingency Plan
<b>CAG</b>	Community Advisory Group	<b>NDMA</b>	n-nitrosodimethylamine
<b>CERCLA</b>	Comprehensive Environmental Response, Compensation, and Liability Act of 1980	<b>OU</b>	Operable Unit
<b>CIP</b>	Community Involvement Plan	<b>PRP</b>	Potentially Responsible Party
<b>DAPL</b>	Dense Aqueous Phase Liquid	<b>SARA</b>	Superfund Amendments and Reauthorization Act of 1986
<b>EPA</b>	United States Environmental Protection Agency	<b>TAG</b>	Technical Assistance Grant
<b>GSA</b>	Groundwater Study Area	<b>TASC</b>	Technical Assistance Services for Communities
<b>MassDEP</b>	Massachusetts Department of Environmental Protection	<b>WERC</b>	Wilmington Environmental Restoration Committee

**OLIN CHEMICAL SUPERFUND SITE  
COMMUNITY INVOLVEMENT PLAN**

**November 2022 (DRAFT)**



[www.epa.gov/superfund/olin](http://www.epa.gov/superfund/olin)



# Public Comment Period for Olin Chemical Superfund Site Draft Community Involvement Plan

EPA is seeking comments on the draft Community Involvement Plan (CIP) for the Olin Chemical Superfund Site. A CIP is a site-specific strategy to enable meaningful community involvement throughout the Superfund cleanup process.

EPA will accept comments on the document from **November 17th to December 15th, 2022**. The CIP is available on the site's webpage for review. The public may submit comments in writing by mail or email.



[gray.charlotte@epa.gov](mailto:gray.charlotte@epa.gov)



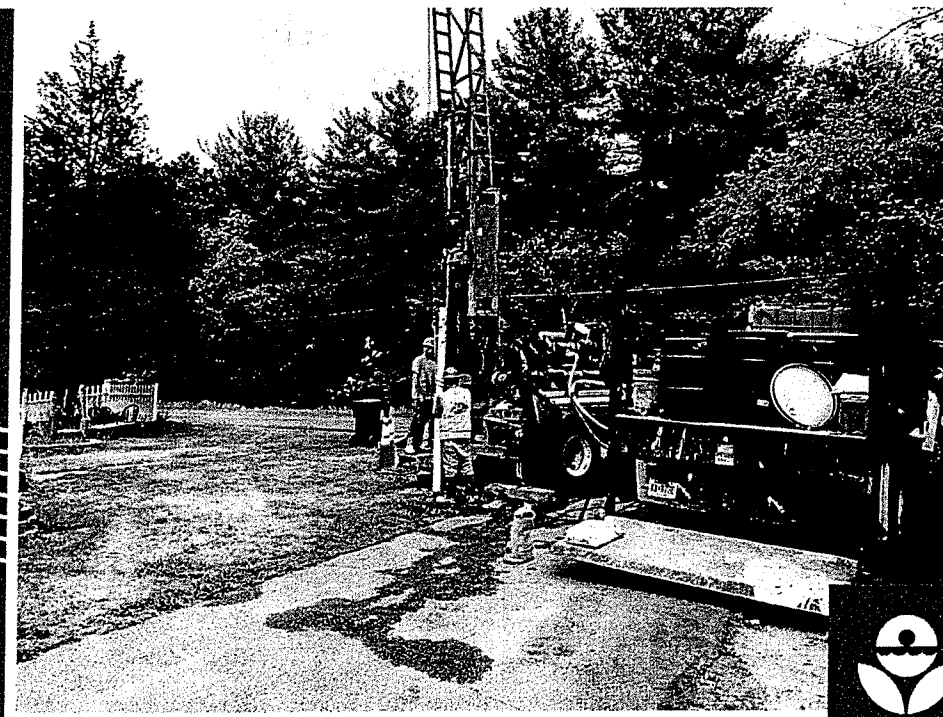
[www.epa.gov/superfund/olin](http://www.epa.gov/superfund/olin)



Charlotte Gray  
U.S. EPA Region 1  
5 Post Office Square  
Boston, MA 02109



Questions? Call 617-918-1243 or email [gray.charlotte@epa.gov](mailto:gray.charlotte@epa.gov)





November 18, 2022

Board of Selectmen  
Town of Wilmington  
121 Glen Road  
Wilmington, MA 01887

***RE: Important Information—Price Changes***

Dear Chairman and Members of the Board:

At Comcast, we are always committed to delivering the entertainment and services that matter most to our customers in your community, as well as exciting experiences they won't find anywhere else. We are also focused on making our network stronger in order to meet our customers' current needs and future demands. As we continue to invest in our network, products, and services, the cost of doing business rises. Rising programming costs, most notably for broadcast TV and sports, continue to be the biggest factors driving price increases. While we absorb some of these costs, these fee increases affect service pricing. As a result, starting December 20, 2022, prices for certain services and fees will be increasing, including the Broadcast TV Fee and the Regional Sports Network Fee.

Enclosed are the notices customers will receive within their bill starting November 20, 2022. We know you may have questions about these changes. If I can be of any further assistance, please don't hesitate to contact me via email at [kerry\\_morris@comcast.com](mailto:kerry_morris@comcast.com).

Sincerely,

*Kerry Morris*

Kerry Morris, Sr. Manager  
Government & Regulatory Affairs

Enclosures: Customer Notices

xfinity



# Important information regarding your Xfinity services and pricing

Effective December 20, 2022

<b>Xfinity TV</b>	<b>Current</b>	<b>New</b>
Limited Basic	\$16.00	\$18.00
Broadcast TV Fee	\$22.25	\$24.70
Regional Sports Fee	\$14.10	\$14.45
Franchise Costs	\$0.48	\$0.51
Choice TV Select	\$32.50	\$37.50
Choice TV Select - with TV Box	\$41.00	\$47.50
Service to Additional TV with TV Adapter	\$8.50	\$10.00
TV Box and Remote	\$8.50	\$10.00
HD TV Box and Remote Limited Basic	\$8.50	\$10.00

<b>Pay-Per-View and On Demand Subscription Services</b>	<b>Current</b>	<b>New</b>
Acorn TV On Demand	\$5.99	\$6.99

<b>Installation</b>	<b>Current</b>	<b>New</b>
In-Home Service Visit - After Initial Installation of Service	\$70.00	\$100.00

<b>Xfinity Internet</b>	<b>Current</b>	<b>New</b>
Modem Rental	\$14.00	\$15.00

*Important Information – Price Changes  
December 20, 2022  
Additional Information*

In addition to the price changes listed in the attached general **Important Information Regarding Xfinity Services and Pricing**, customers subscribing to the services below will receive a bill message regarding the pricing change to their service.

**Bill Message Text:**

*“In addition to the price changes listed on the general Important Information Regarding Xfinity Services and Pricing, on December 20, 2022, the price of [package or service name from below] will increase from \$XX.XX to \$XX.XX per month. Prices exclude taxes and fees.”*

<b>SERVICES NO LONGER AVAILABLE FOR NEW SUBSCRIPTIONS</b>	<b>Current</b>	<b>New</b>
Digital Preferred Tier	\$17.95	\$20.00
Choice Limited TV	\$30.00	\$35.00
Digital Preferred Package	\$85.22	\$87.27
Digital Preferred Tier with Showtime	\$29.95	\$32.00
Digital Preferred Tier with The Movie Channel	\$29.95	\$32.00
Digital Preferred Tier with Cinemax	\$29.95	\$32.00
Digital Preferred Tier With HBO Max	\$32.94	\$34.99
Choice Triple Play	\$99.99	\$100.99
Standard+ More Triple Play	\$130.99	\$131.99
Select+ More Triple Play	\$159.99	\$160.99
Signature+ More Triple Play	\$189.99	\$190.99
Super+ More Triple Play	\$199.99	\$201.99
Preferred Triple Play (MDU)	\$117.99	\$120.99
Preferred Extra Triple Play	\$129.99	\$132.99
Select Triple Play	\$149.99	\$151.99
Signature Triple Play	\$169.99	\$171.99
Super Triple Play	\$199.99	\$201.99
HD Extra Bundle	\$162.99	\$165.99
HD Plus Triple Play	\$187.99	\$190.99
Value Plus Triple Play	\$142.99	\$145.99
MultiLatino Ultra Triple Play	\$162.99	\$165.99
MultiLatino Ultra Bundle	\$162.99	\$165.99
MultiLatino Ultra HD Triple Play	\$172.99	\$175.99
MultiLatino HD Ultra Plus	\$192.99	\$195.99
MultiLatino Ultra Plus	\$192.99	\$195.99
Extra XF Bundle	\$154.99	\$157.99
Preferred XF Bundle	\$167.99	\$170.99

<b>SERVICES NO LONGER AVAILABLE FOR NEW SUBSCRIPTIONS Cont.</b>	<b>Current</b>	<b>New</b>
Standard+ Double Play	\$110.99	\$114.99
Select+ Double Play	\$139.99	\$141.99
Signature+ Double Play	\$169.99	\$171.99
Super+ Double Play	\$189.99	\$191.99
Preferred & Internet Pkg (MDU)	\$91.89	\$94.89
Economy Double Play	\$99.99	\$102.99
Select Double Play	\$119.99	\$122.99
Signature Double Play	\$139.99	\$142.99
Super Double Play	\$169.99	\$172.99
Blast! Plus Double Play with HBO Max	\$109.99	\$112.99
Internet Pro Plus Double Play with HBO Max	\$94.99	\$97.99
Internet Pro Plus Double Play with Showtime	\$91.99	\$94.99
Premier Double Play with Performance Pro Int	\$189.99	\$192.99
Internet Plus Latino Double Play	\$87.99	\$90.99
Internet Plus Double Play with Showtime	\$81.99	\$84.99
Blast! Extra Double Play	\$92.99	\$95.99
Blast! Plus Double Play	\$102.99	\$105.99
Preferred Double Play	\$151.99	\$154.99
Multilatino Double Play	\$136.99	\$139.99
Internet Plus Double Play with HBO	\$87.99	\$90.99
Preferred Latino Double Play	\$169.99	\$172.99
Performance Internet	\$64.95	\$67.00
Gigabit Pro Internet	\$299.95	\$300.00
Gigabit x2 Internet	\$129.95	\$130.00
Performance Starter Internet	\$59.95	\$65.00
Desi Pack	\$29.99	\$32.99
Modem Rental	\$14.00	\$15.00

Starter Latino Triple Play	\$149.99	\$152.99
Multilatin Total HD Triple Play	\$217.99	\$220.99
HD Preferred XF Bundle	\$177.99	\$180.99
HD Preferred Plus XF Bundle	\$197.99	\$200.99
HD Premier Sports Bundle	\$222.99	\$225.99
HD Premier XF Bundle	\$222.99	\$225.99
HD Complete XF Bundle	\$241.99	\$244.99
Preferred Latino Triple Play	\$167.99	\$170.99
Preferred Extra Latino Triple Play	\$177.99	\$180.99
Economy Plus Latino Triple Play	\$142.99	\$145.99
HD Preferred Extra XF Bundle	\$194.99	\$197.99
Basic Pro Triple Play	\$112.99	\$115.99
Economy Pro Triple Play	\$120.99	\$123.99
Preferred Plus Triple Play (MDU)	\$139.99	\$142.99
HD Preferred Triple Play (MDU)	\$127.99	\$130.99
HD Preferred Plus Triple Play (MDU)	\$149.99	\$152.99
Choice Double Play	\$89.99	\$90.99

MyTV Choice Get Started	\$24.27	\$26.32
MyTV Choice Get Started with One Theme Pack	\$34.27	\$36.32
MyTV Choice Get Started with Two Theme Packs	\$44.27	\$46.32
MyTV Choice Get Started with Three Theme Packs	\$54.27	\$56.32
MyTV Choice Get Started Plus	\$42.27	\$44.32
MyTV Choice Get Started Plus with One Theme Pack	\$52.27	\$54.32
MyTV Choice Get Started with Two Theme Packs	\$62.27	\$64.32
MyTV Choice	\$109.99	\$114.49
MyTV Choice With One Theme Pack	\$119.99	\$122.99
MyTV Choice With Two Theme Packs	\$129.99	\$132.99
MyTV Choice With Three Theme Pack	\$139.99	\$142.99
MyTV Choice With Four Theme Packs	\$149.99	\$152.99
MyTV Choice Plus	\$126.99	\$129.99
MyTV Choice Plus With One Theme Pack	\$136.99	\$139.99
MyTV Choice Plus With Two Theme Packs	\$146.99	\$149.99
MyTV Choice Plus With Three Theme Packs	\$156.99	\$159.99

**Important Information - Price Changes**

**December 20, 2022**

**Additional Information Continued**

<b>SERVICES NO LONGER AVAILABLE FOR NEW SUBSCRIPTIONS</b>	<b>Current</b>	<b>New</b>
PREMIER TIER W/SPORTS	\$ 59.95	\$ 62.00
DIGITAL PREMIER TIER WITH SPORTS	\$ 63.95	\$ 66.00
DIGITAL PREMIER TIER	\$ 64.95	\$ 67.00
TOTAL PREMIUM	\$ 64.95	\$ 67.00
PERFORMANCE INTERNET & VOICE	\$ 109.90	\$ 111.95
DIGITAL PREMIER WITH SPORTS AND 4 PREMIUM CHANNELS	\$ 127.22	\$ 129.27
DOUBLE PLAY BUNDLE WITH BLAST! INTERNET & VOICE	\$ 129.90	\$ 131.95
PREFERRED DOUBLE PLAY WITH UNLIMITED VOICE	\$ 130.17	\$ 132.22
DIGITAL PREMIER WITH SPORTS AND 5 PREMIUM CHANNELS	\$ 131.22	\$ 133.27
DIGITAL PREMIER PACKAGE WITH 5 PREMIUM CHANNELS	\$ 132.22	\$ 134.27
EXTRA XF DOUBLE PLAY	\$ 132.22	\$ 134.27
EXTRA DOUBLE PLAY WITH UNLIMITED VOICE	\$ 152.22	\$ 154.27



**TOWN OF WILMINGTON**  
**DEPARTMENT OF PUBLIC WORKS**

Highway            Water & Sewer            Engineering  
Tree                Parks & Grounds        Cemetery

**Interoffice Memorandum**

**TO:** Jeffrey M. Hull, Town Manager

**FROM:** Jamie M. Magaldi, PE, MCA, Public Works Director *JMM*

**SUBJECT:** Shawsheen Ave / Hopkins Street Signal Improvements – Project Update

**DATE:** November 22, 2022

**CC:** Paul Alunni, Town Engineer  
Joseph Lobao, Deputy Public Works Director  
Bryan Perry, Finance Director / Town Accountant

Public bids were opened for the Shawsheen Ave / Hopkins Street Signal Improvement Project on August 24, 2022. Since the Town of Wilmington received one bid for this project and it was over budget, the specifications were modified to broaden the field of qualified bidders for more favorable bid competition by requiring the subcontractor performing the signal work to hold the MassDOT prequalification for traffic signals in lieu of requiring the general contractor to hold this designation. The project was then re-bid and public bids were opened on Wednesday October 26, 2022. The town received 8 sealed bids during the second bid opening. The apparent low bidder was Dagle Electrical Construction Corporation for a total construction cost of \$619,282.00.

As a reminder, the Town secured FY23 capital funding for this project at 2022 Town Meeting in the amount of \$550,000. The Department of Public Works applied for \$120,000 in uncommitted Chapter 90 funding from the MassDOT District 4 State Aid office to help offset the higher than expected construction cost, and also fund construction engineering services for the project. This Chapter 90 request has been approved by MassDOT.

The Town of Wilmington executed a contract with Dagle Electrical Construction Corporation for construction services related to this project on November 14, 2022. The project does include some curbing adjustments to the intersection but is mainly a traffic signal replacement project.

Due to supply chain issues related to traffic signal equipment, and from discussions with our consulting engineers and signal contractors on other maintenance projects, it is not unreasonable to assume that project materials may take upwards of 8 months or more to be delivered once ordered. It is very likely the project will need to therefore be carried into FY24, with construction anticipated closer to the fall of 2023.

As such, the Department of Public Works will be coordinating with the contractor to get more information on realistic timeframes once shop drawings for materials are approved.



**TOWN OF WILMINGTON**  
**DEPARTMENT OF PUBLIC WORKS**

Highway      Water & Sewer      Engineering  
Tree          Parks & Grounds      Cemetery

**Interoffice Memorandum**

**TO:** Jeffrey M. Hull, Town Manager  
**FROM:** Joseph Lobao, Deputy Director of Public Works  
**SUBJECT:** North Shore Water Resilience Task Force  
**DATE:** November 18, 2022

The Town of Wilmington recently signed a charter agreement to join the North Shore Water Resilience Task Force. The group, convened by the region's legislative delegation, and chaired by state Senator Bruce Tarr (R- Gloucester), is comprised of 20 local municipalities, public water suppliers and environmental organizations. The Task Force's goal is to develop consensus on one or more initiatives to increase the health of the Ipswich River and strengthen water supply sustainability for municipalities. According to the Charter, "members will engage in discussion, information sharing, problem solving and consensus building to advance the mission of the task force."

There is no financial cost to join this regional collaboration and as a member, Wilmington will have an opportunity to participate in roundtable discussions that focus on water resource resiliency of the Ipswich River Watershed area and specifically, how decisions may impact Wilmington. Furthermore, as a member, Wilmington may be able to secure future funding opportunities to address issues related to the supply of drinking water.

The Water Resilience Task Force consists of:

City of Beverly	Town of Hamilton
City of Lynn	Town of Ipswich
Lynn Water and Sewer	Town of Lynnfield/Lynnfield Water District
City of Peabody	Town of Middleton
City of Salem	Town of North Andover
Ipswich River Watershed Association	Town of North Reading
Salem and Beverly Water Supply Board	Town of Reading
Town of Andover	Town of Topsfield
Town of Boxford	Town of Wenham
Town of Burlington	Town of Wilmington
Town of Danvers	

As the Task Force is in the beginning stages, the Department of Public Works looks forward to collaborating with area colleges to work toward common water resource goals.

## Ipswich River Watershed Stakeholders Sign Major Agreement

### Unprecedented Charter Sets Stage for Resource Protection

### And Water Supply Resilience

HATHORNE MA - Following nearly two years of intensive conversations and against the backdrop of this year's ongoing drought, stakeholders affected by the Ipswich River Watershed have signed a landmark charter agreement that sets the stage for the development and implementation of regional strategies to protect the health of the watershed and ensure the adequacy and sustainability of drinking water supplies in the communities depending on it.

The charter establishes the structure of the North Shore Water Resiliency Task Force, convened by the region's legislative delegation, and chaired by state Senator Bruce Tarr (R- Gloucester). The group, comprised of some 20 municipalities, public water suppliers and environmental organizations is unified for the first time in a collaborative process geared toward finding a path forward to protect the water that 350,000 people and countless species of wildlife depend on.

"The Watershed represents the lifeblood for our region. The issues of drought and water supply cannot be effectively addressed without a regional approach and I believe that our stakeholders have the ability to come together in an unprecedented way that can lead the Commonwealth," said **Senate Minority Leader Bruce Tarr**. "We are now holding a framework for the future that empowers us to work on one of the most vexing problems that our communities face - access to clean water."

The Task Force's overarching goal is to develop consensus on one or more initiatives to increase the health of the river and strengthen water supply sustainability, and, if consensus can be found, to take action on its components. The operations of the group are facilitated by a 3-person team consisting of Sara Cohen from the Massachusetts Department of Conservation and Recreation, and Martin Pillsbury and Leah Robins from the Metropolitan Area Planning Commission (MAPC).

Signatories to the agreement include the towns of Andover, Boxford, Burlington, Danvers, Hamilton, Ipswich, Lynnfield/ Lynnfield Center Water District (Pending), Middleton, North Andover, North Reading, Reading, Topsfield, Wenham, and Wilmington and the cities of Beverly, Lynn/ Lynn Water and Sewer Commission, Peabody, Salem, the Salem and Beverly Water Supply Board and The Ipswich River Watershed Association.

The legislative convenors of the organization include Senators Tarr and Senator Brendan Crighton, Senator Diana DiZoglio, Senator Barry Finegold, Senator Cindy Friedman, Senator Jason Lewis, Senator Joan Lovely, Representative Jamie Zahlaway Belsito, Representative Dan Cahill, Representative Peter Capano, Representative Ann-Margaret Ferrante, Representative Ken Gordon, Representative Richard Haggerty, Representative Brad Jones, Representative Sally Kerans, Representative Christina Minicucci, Representative Lenny Mirra, Representative Frank Moran, Representative Tram Nguyen, Representative Jerry Parisella, Representative Dave Robertson, Representative Paul Tucker, Representative Tom Walsh, Representative Donald Wong

. Throughout the creation and development of the task force, the convenors have been clear that their role is not to make decisions for the stakeholders, but to create the opportunity for the stakeholders to reach an agreement on actions that they can take together that would not be feasible on an individual basis. Examples range from increasing water capture and storage facilities to more extensive water sharing, to regional conservation efforts to additional imports from other sources. Importantly, the task force benefits from the active support and engagement of U.S. Representative Seth Moulton and U.S. Senator Ed Markey.

The structure of the task force also draws on the expertise and insight of other individuals and organizations to support its work, including state agencies, environmental advocacy groups, neighboring communities, and others, who are named in the charter but not signatory members. This category of participants will clearly be a major resource for the members in identifying, analyzing, and confronting the challenges of meeting its dual priorities of resource protection and water supply sustainability.

The signing of the charter agreement comes even as the legislature and Governor Charlie Baker have already approved funding for preliminary studies to be undertaken by the task force on specific issues through budgetary amendments offered by Tarr and supported by the legislative delegation. Members are currently at work designing the first of these studies, armed with \$100,000 in funding secured in the Fiscal Year 2022 state budget and carried forward. The contract for that study will be administered by MAPC on behalf of the task force. A second appropriation of \$150,000 will support future study efforts as the group's work progresses. These studies will build on those recently completed by the Town of Hamilton and the Ipswich River Watershed Association, the Town of Danvers, and the Massachusetts Water Resources Authority.